

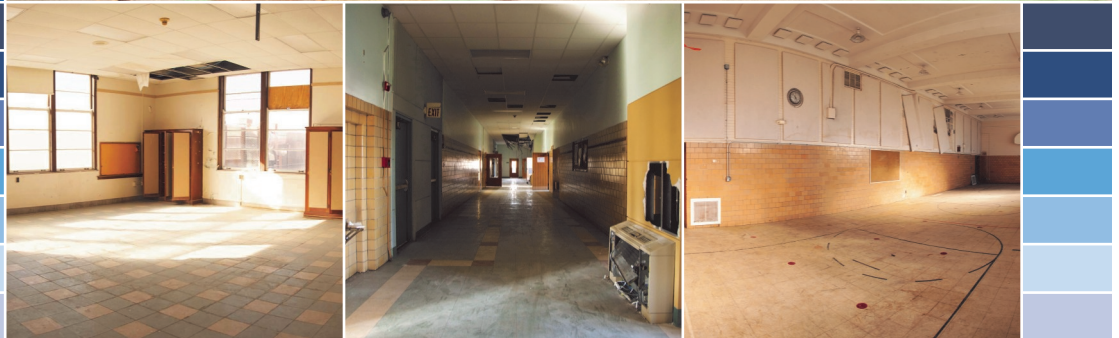
For  
SALE

\$674,752

# Banneker School

Mid-Century Building  
Year Built: 1940  
Approx. 47,896 sq. ft.  
Acreage: 1.15  
4 Floors  
Gymnasium  
Central HVAC  
Hardwood Floors  
Zoning: J

*All information herein has been compiled by the broker from the seller and other sources. It is not verified or guaranteed by the broker.*



Offered by:



2840 Samuel Shepard, St. Louis, MO 63103

Banneker School was constructed in 1940 and was in operation until 2004. This historic structure boasts over 47,000 square feet that can be converted to a variety of commercial, residential or institutional uses.

Located adjacent to the vibrant Locust Central Business District just west of Downtown. This modern styled building abuts a residential area to the north and a commercial area to the south. It's location between Grand Center and Downtown is ideal for just about any re-use.

Please call Doug Marshall or Kurt Schulte for more information at 314.395.9905

[www.drpstl.com](http://www.drpstl.com)





---

FOR MORE INFORMATION ON THIS PROPERTY AND ALL SLPS  
SURPLUS SCHOOLS, PLEASE VISIT [WWW.DRPSTL.COM](http://WWW.DRPSTL.COM)

---

