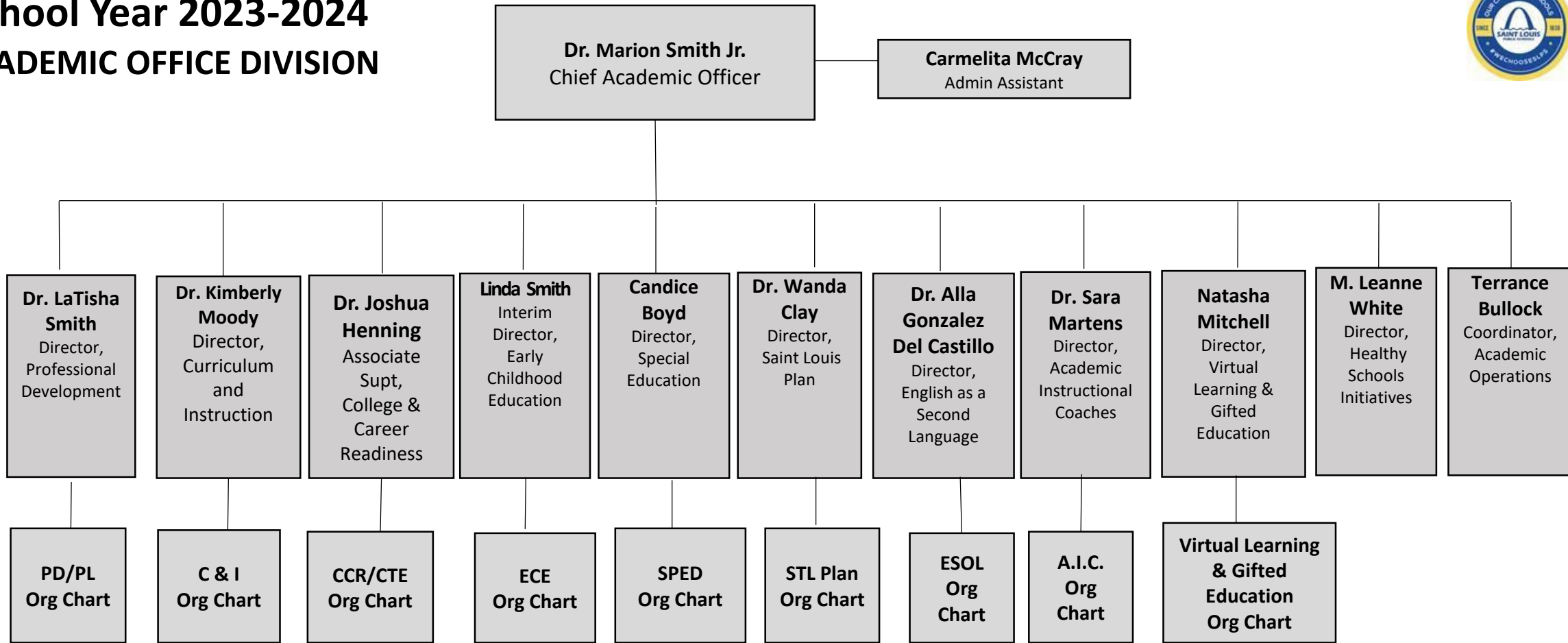


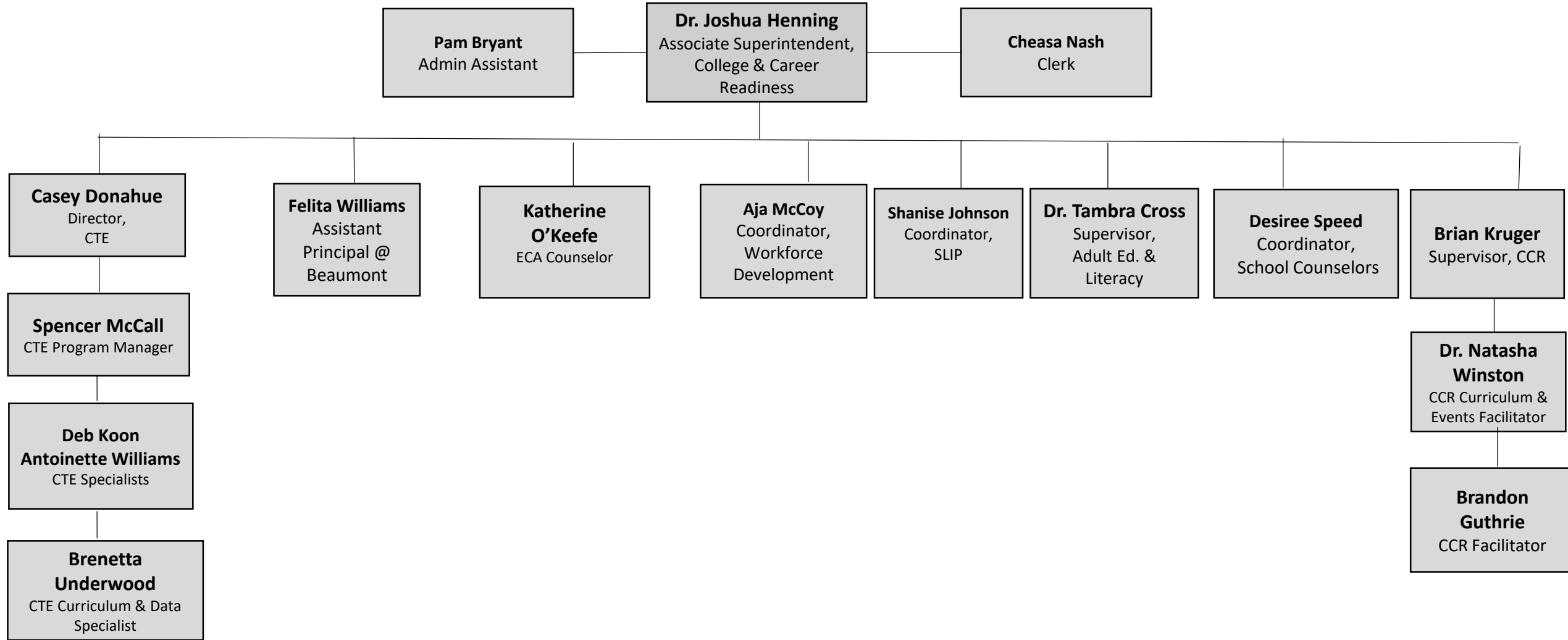
# School Year 2023-2024

## ACADEMIC OFFICE DIVISION



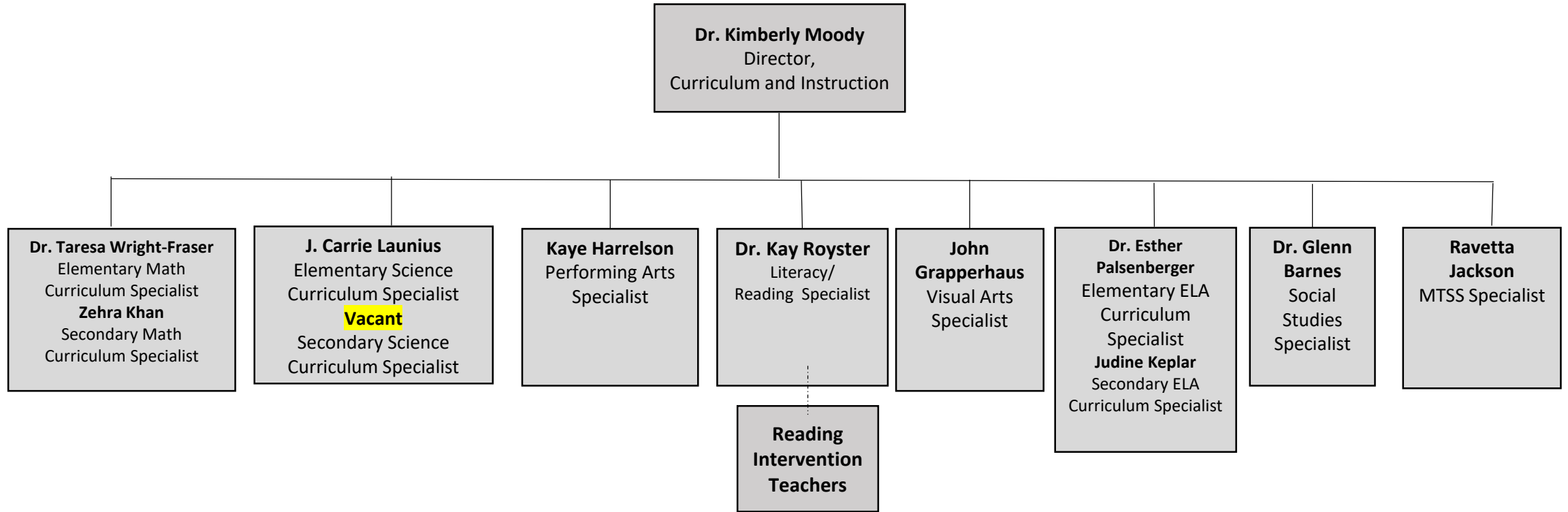


# College & Career Readiness Department



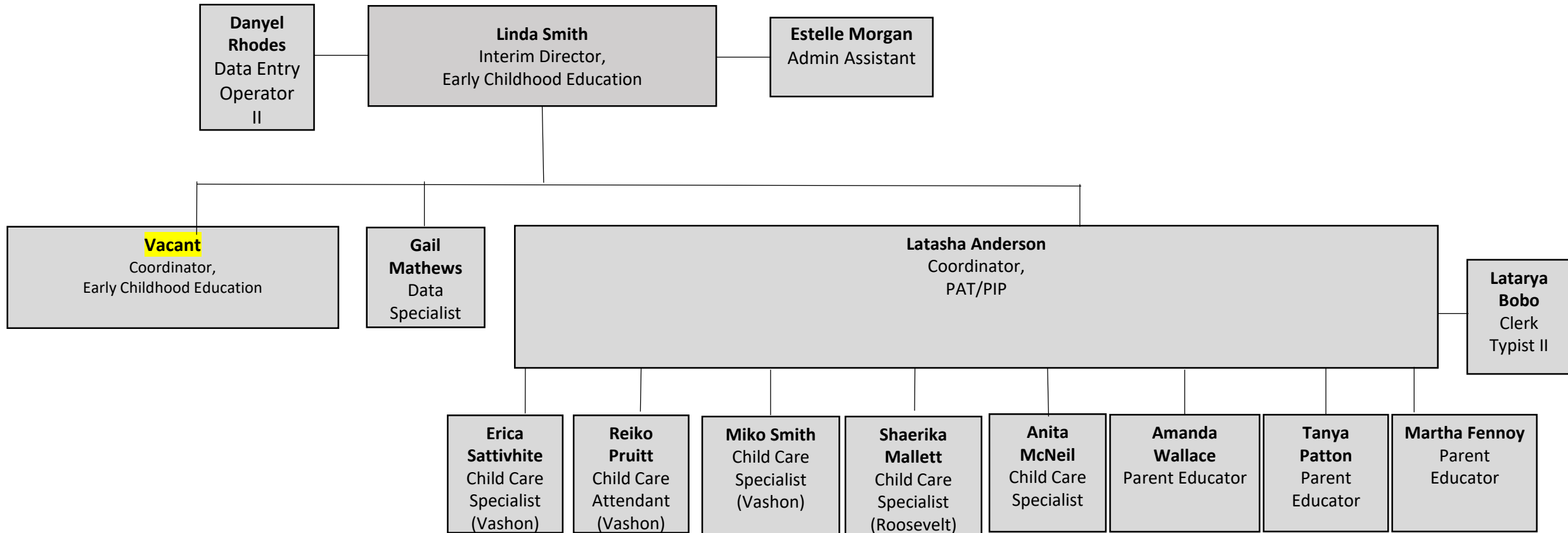


# Curriculum and Instruction Department



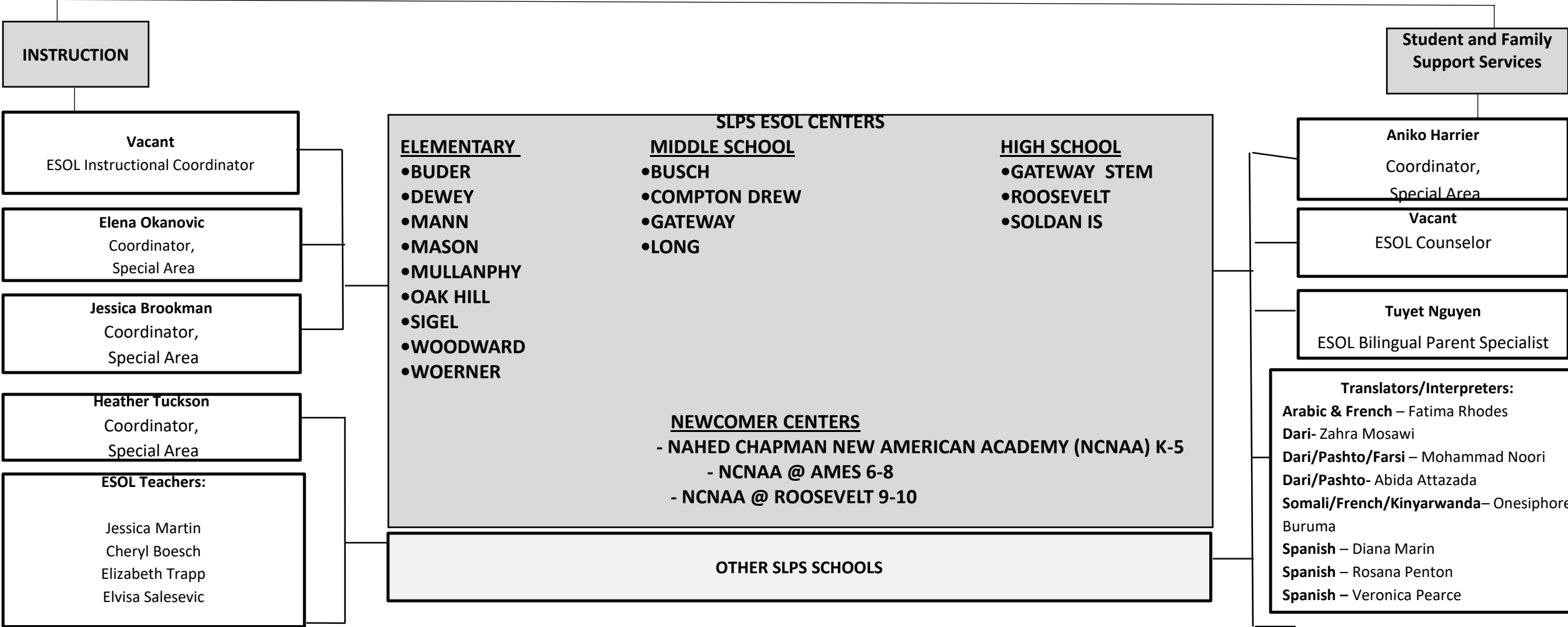
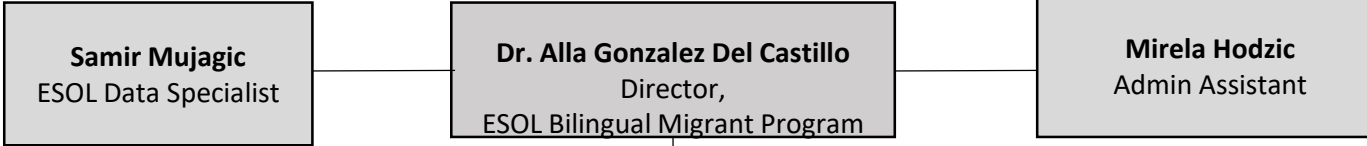


# Early Childhood Education Department



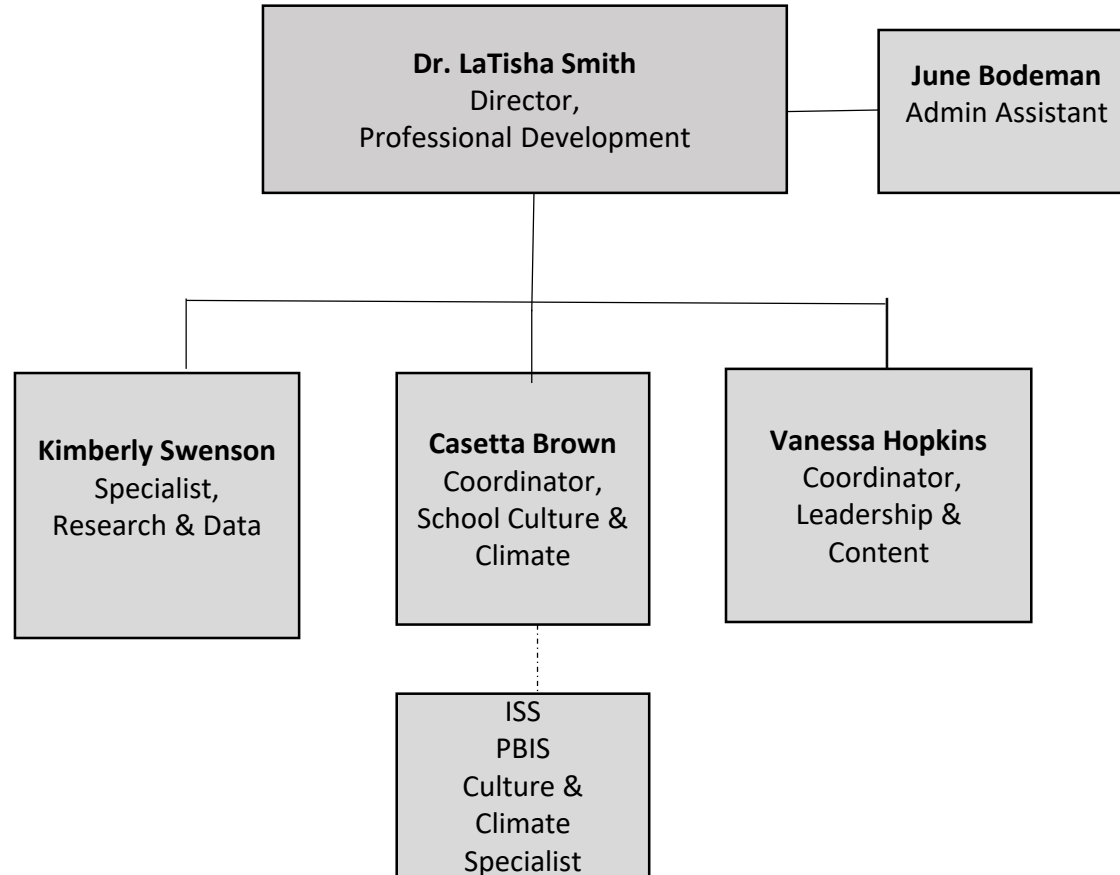


# ESOL Bilingual Migrant Program



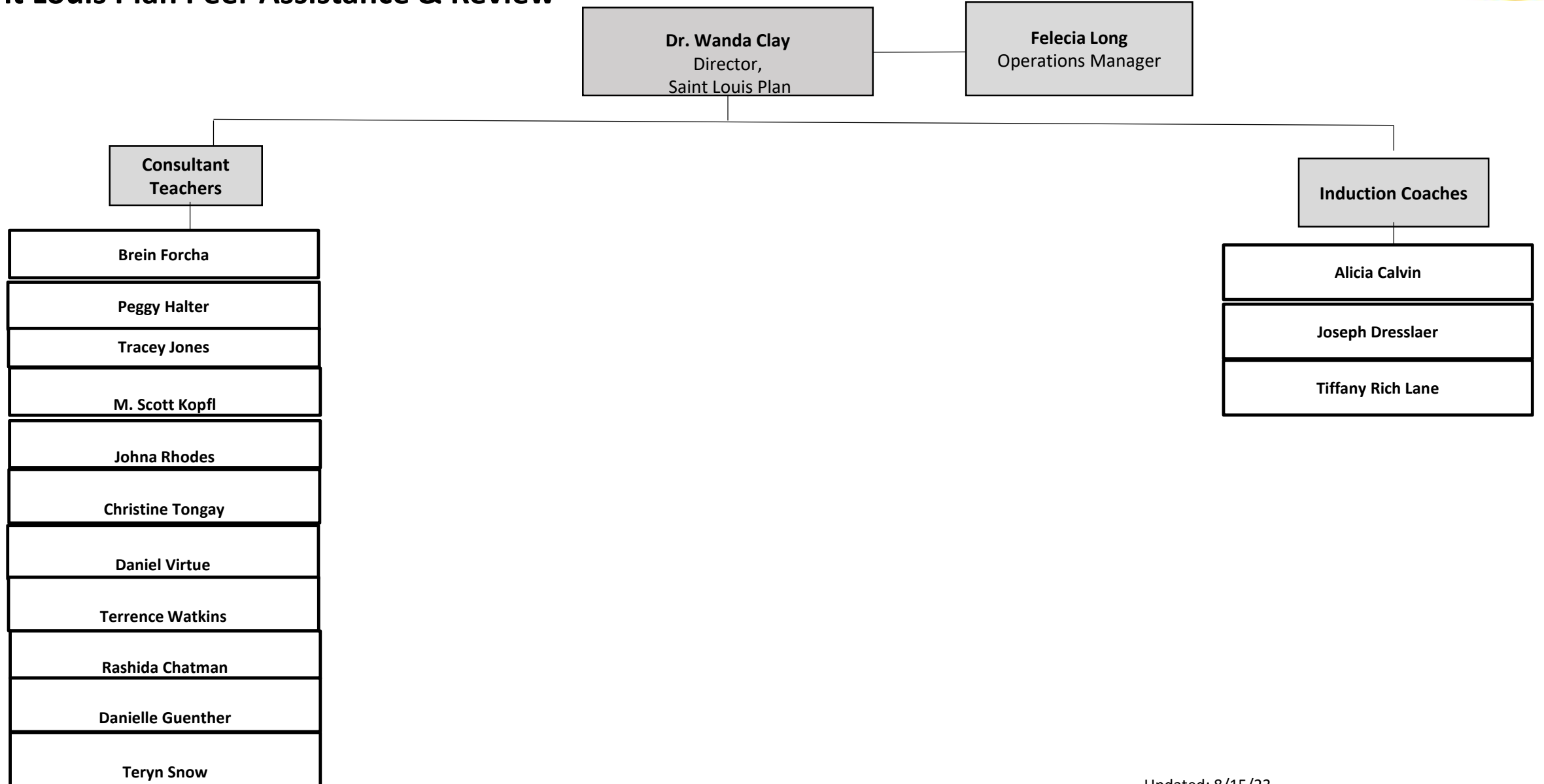


# Professional Development Department



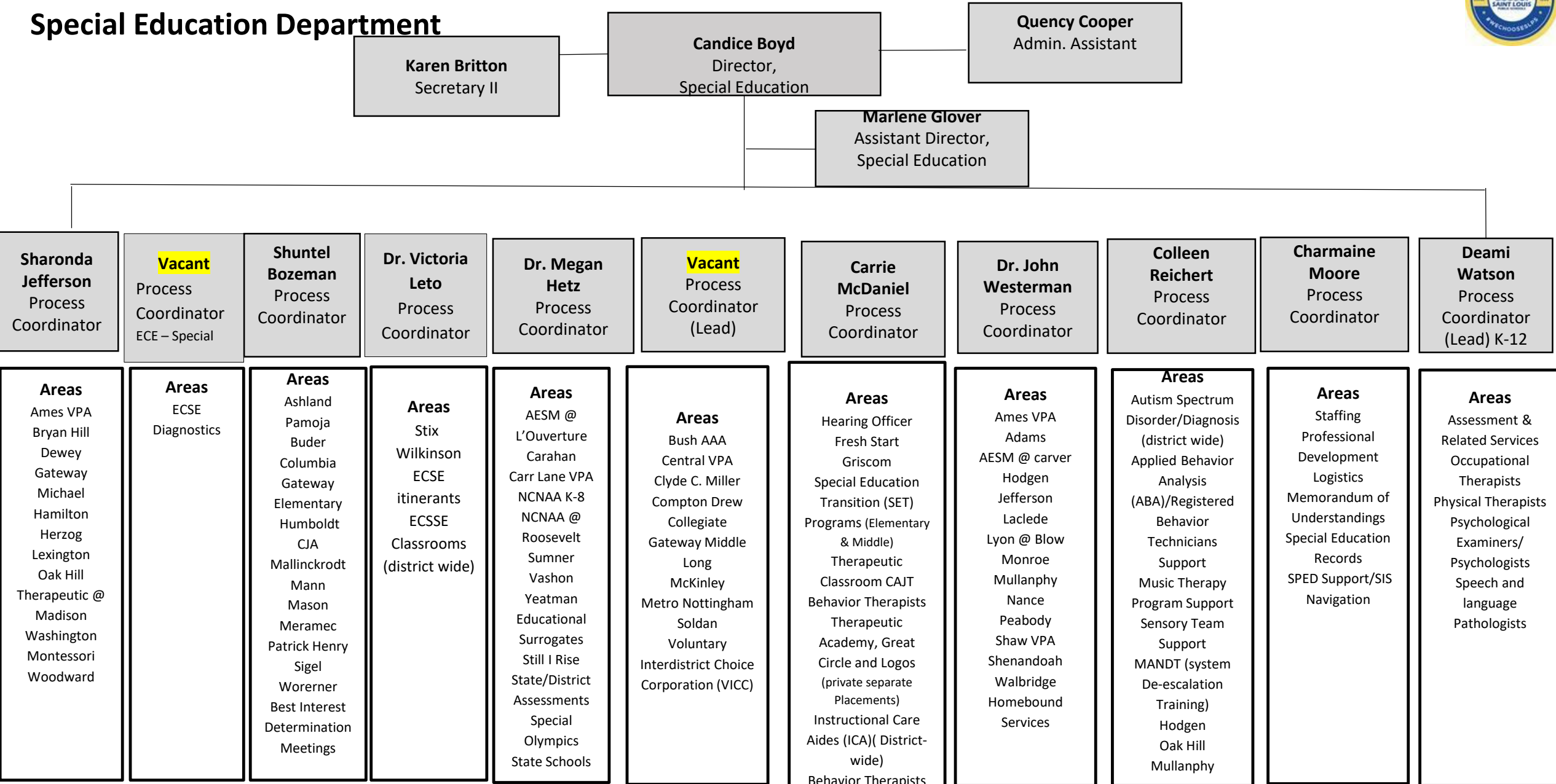


# Saint Louis Plan Peer Assistance & Review





# Special Education Department





**SY 23-24**  
**Virtual Learning and Gifted Education Department**

