



Back to School

PREPARING FOR the Return to School

CHILDREN WITH SPECIAL HEALTH CARE NEEDS

If a child has asthma, allergies, diabetes, seizures, attention deficit disorder, or any other condition requiring special health services it is vital that the parent meet with the school nurse and develop an Individual Health Care Plan prior to school entry.

IMMUNIZATIONS

Each child must meet grade entry immunization requirements.

MEDICATION ADMINISTRATION

For short-term or long-term medication during the school day, parents must provide a physician's order, parental consent and medication (30 days supply).

LEAD POISONING SCREENING

Present documentation of lead poisoning screening upon entry to kindergarten.

EMERGENCY PLANNING

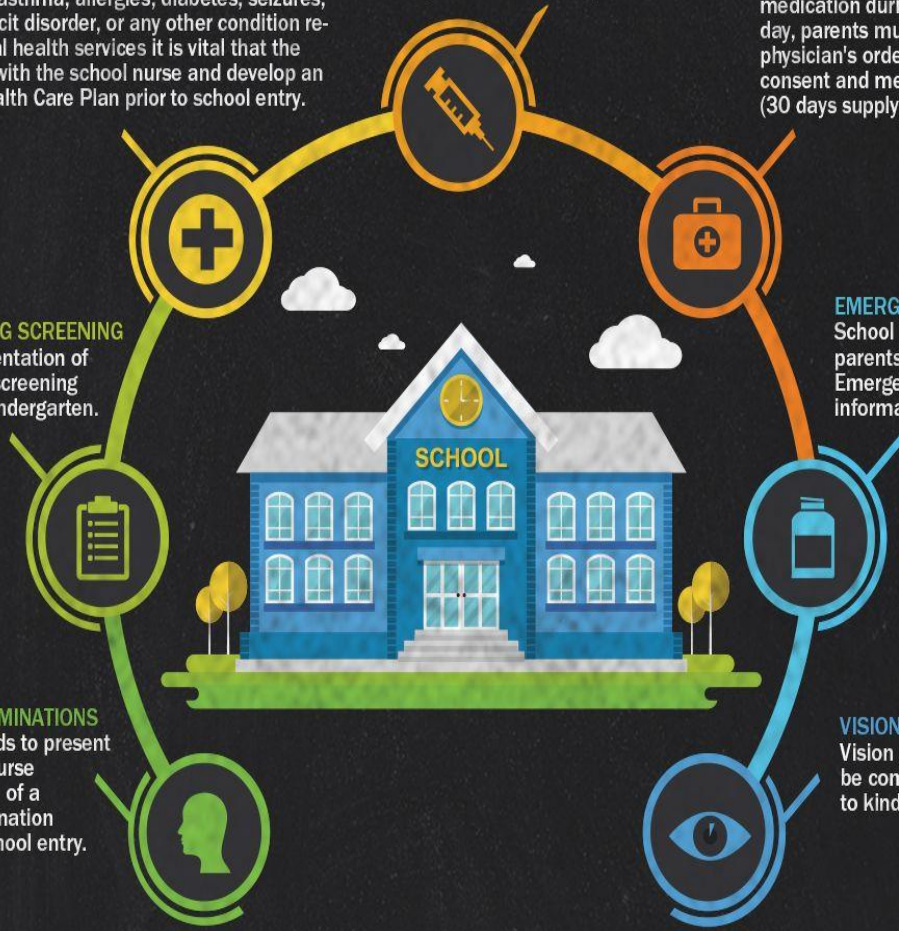
School systems require parents to complete the Emergency Contact information annually.

PHYSICAL EXAMINATIONS

Each child needs to present to the school nurse documentation of a physical examination prior to first school entry.

VISION SCREENING

Vision screening should be completed upon entry to kindergarten.



Source: <http://www.mass.gov/eohhs/gov/departments/dph/programs/community-health/primarycare-healthaccess/school-health/return-to-school.html>