



# Central Visual and Performing Arts High School

## Instrumental Music Auditions

Tuba

J. Pappas

Slowly ♩ = 88

### 1. Overture

Allegro moderato (♩ = c. 116)

March tempo ♩ = 120

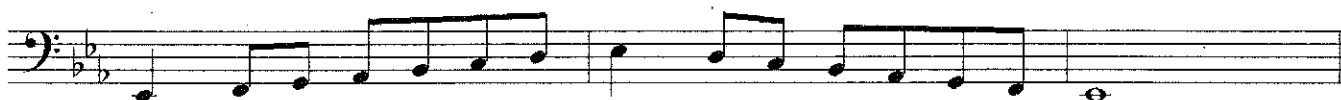
### 2. March

TUBA

3. Concert Ab Major Scale



4. Concert Eb Major Scale



5. Chromatic Scale



General Information:

\*ALL scales are to be played as written at quarter note = 88 bpm.

\*All scales should be performed with a tongued (basic attack – not legato/not staccato) articulation.