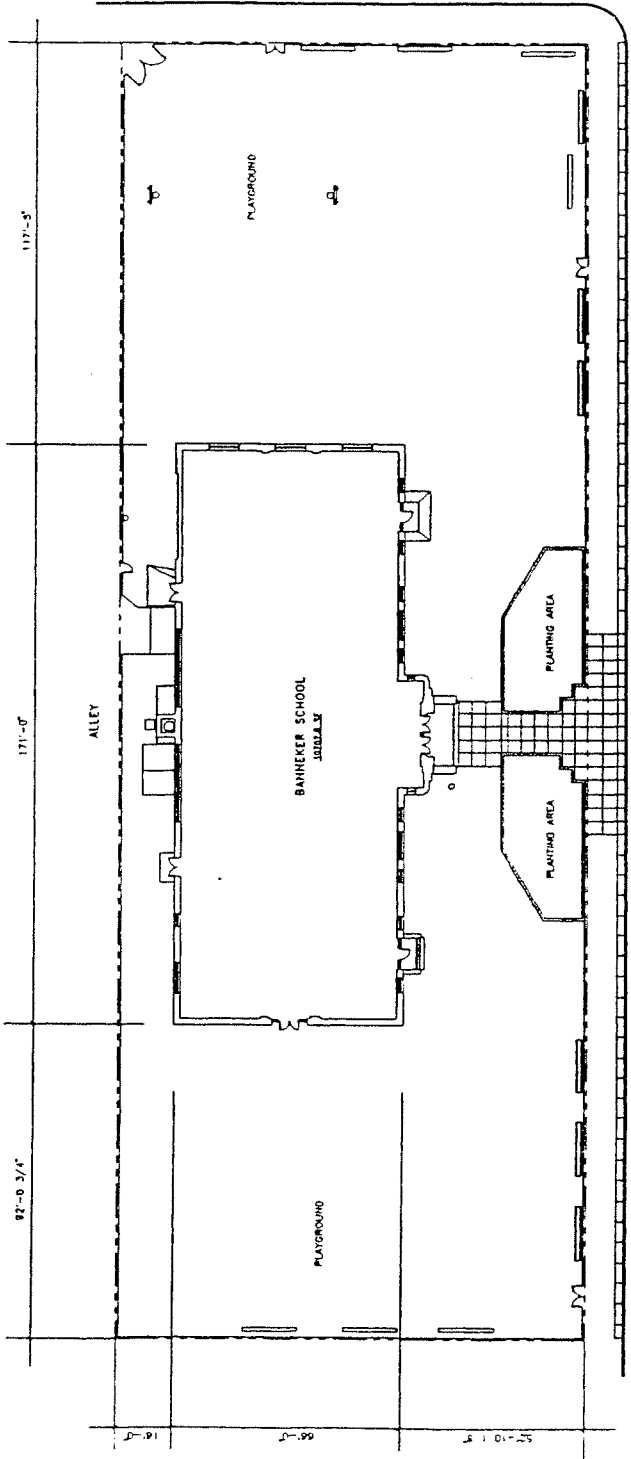
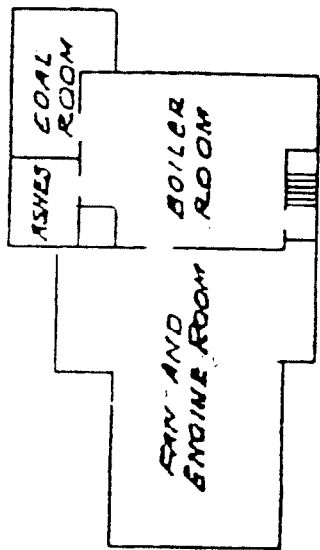


DATE	DRAWN	CHECKED	REVISIONS	SUBMITTALS	NO. SHEETS	SHEET NO.	DATE	PROJECT	SCHOOL	OWNER	ARCHITECT	ENGINEER	PLUMBER	ELECTRICIAN	MECHANICAL	HEATING	COOLING	SOUNDING	SPECIAL	OTHER	TOTAL



1
C
Site Plan
Scale: 1/8" = 1'-0"

Graphic Scale: 1/8" = 1'-0"
0 10 20 30 40

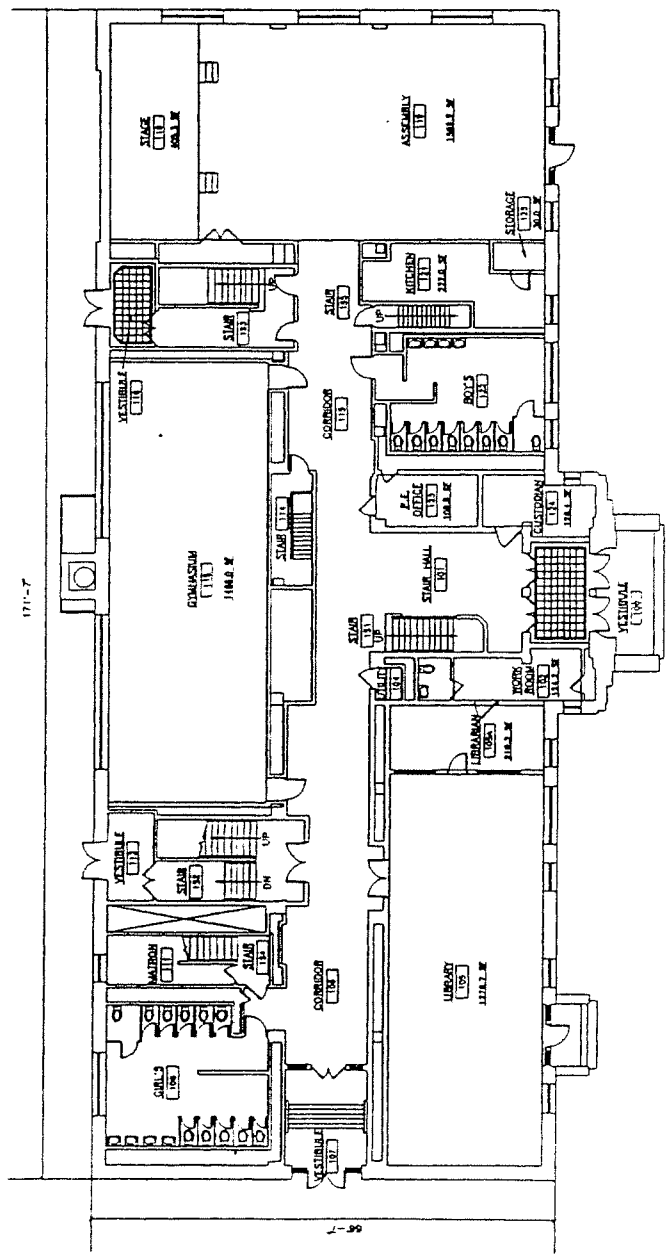


SCHOOL _____ BANNER SCHOOL _____

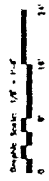
FLOOR _____ BASEMENT PLAN _____

DATE	12/11/77	BY	W. J. BROWN
PROJECT	BANKER SCHOOL		
OWNER	ST. LOUIS, MISSOURI 63103		
ARCHITECT	BANKER SCHOOL		
SCALE	AS SHOWN		
NO.	1711-7		

S/W 1



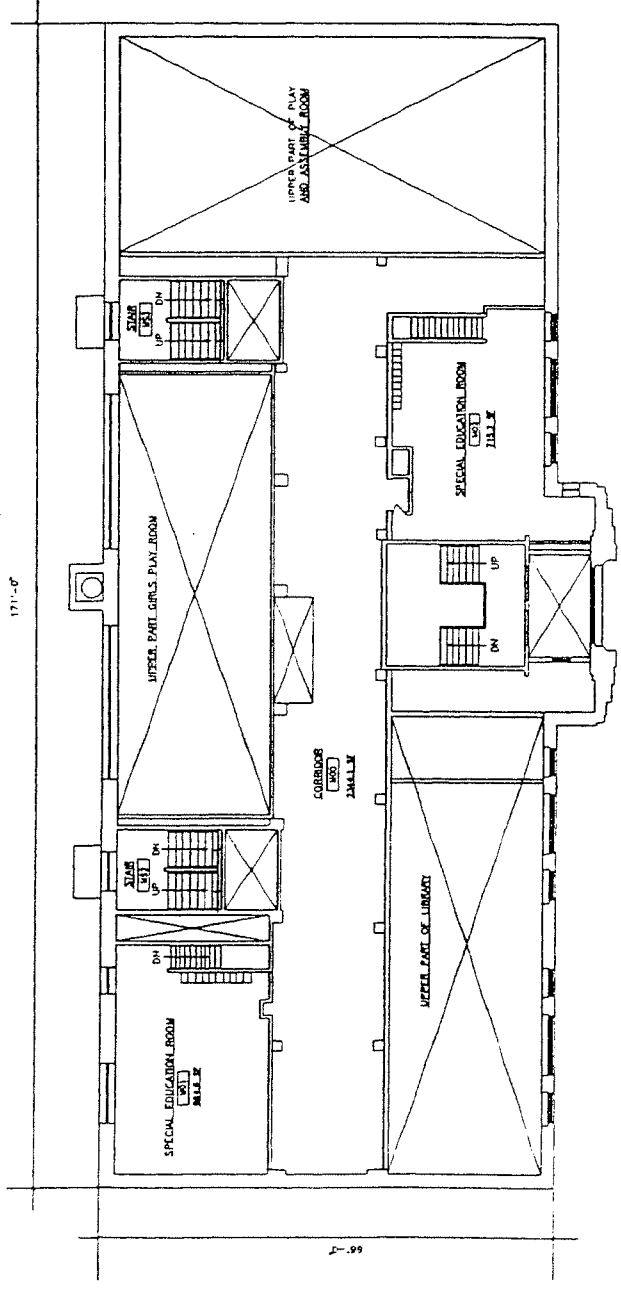
1711-7



First Floor Plan
Scale: 1/8" = 1'-0"



DATE	DRAWN	CHECKED	DESIGNED
DATE	DRAWN	CHECKED	DESIGNED
BANKER SCHOOL ST. LOUIS, MISSOURI 63103			
2840 SAMUEL SHEPARD DR.			
ST. LOUIS, MISSOURI 63103			
WALTER J. JAMES & ASSOCIATES, INC. 1840 OAK DRIVE, ST. LOUIS, MISSOURI 63103 866-251-1111 FAX 866-251-1198			



171'-0"

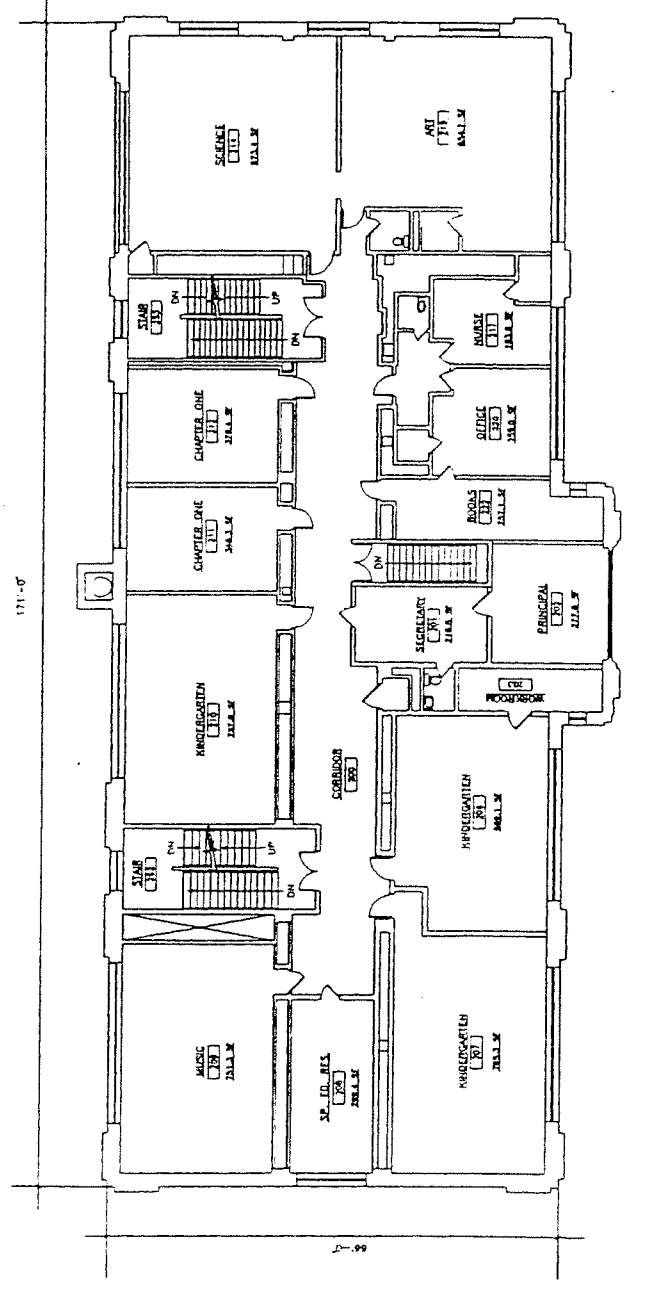
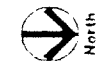
66'-0"

Mezzanine Floor Plan
Scale: 1/8" = 1'-0"

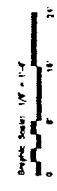


1 MC

DATE	REVISION	BY	CHECKED
BANNER SCHOOL			
2840 SAMUEL SHEPARD DR.			
ST. LOUIS, MISSOURI 63103			
WALTER SANDRITZ & ASSOCIATES, INC.			
10400 BROADWAY, SUITE 1000			
ST. LOUIS, MISSOURI 63141			

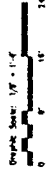
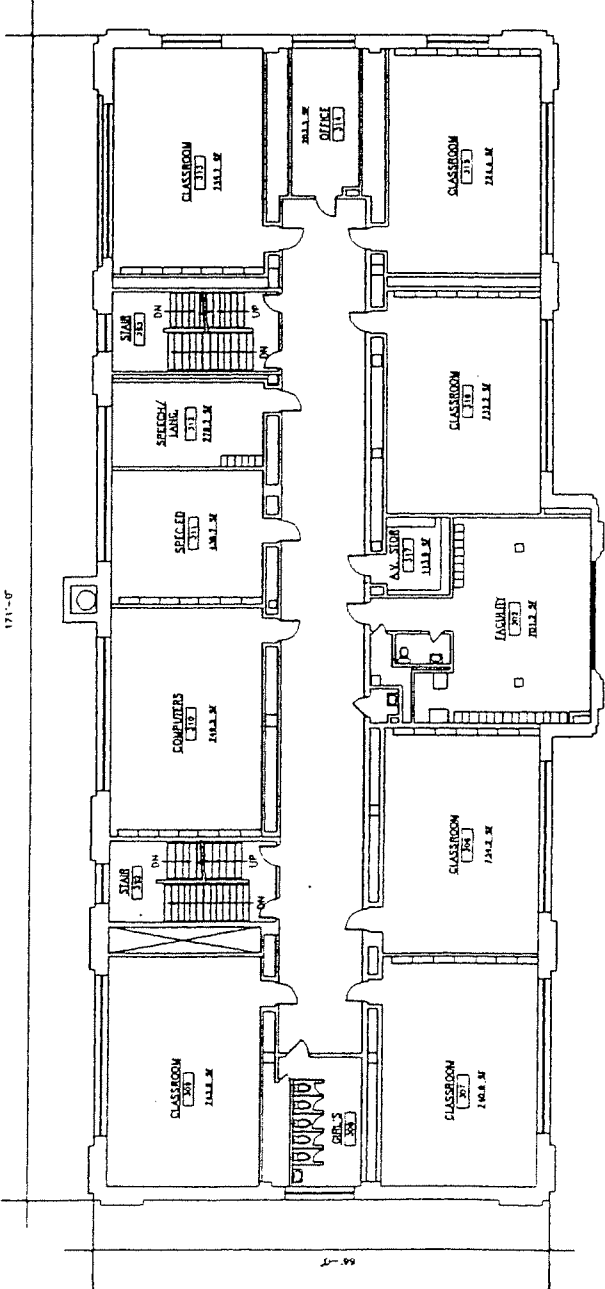


1711'-0"



1 Second Floor Plan
Scale: 1/8" = 1'-0"

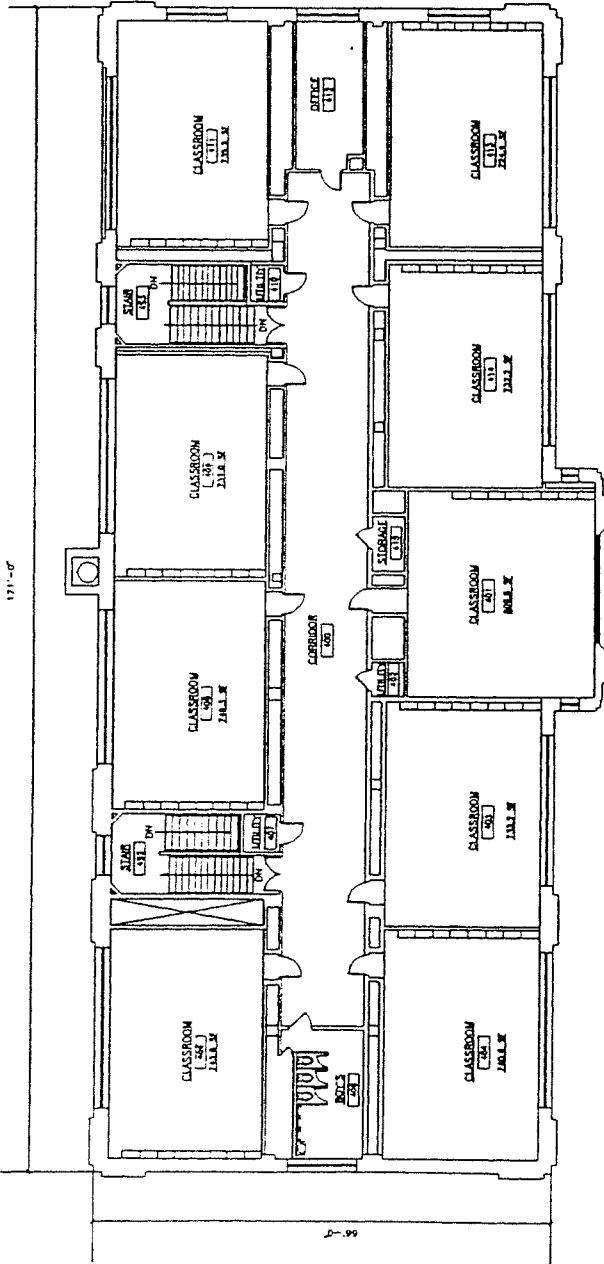
DATE	DESIGNED	DRAWN	CHECKED
BANNER SCHOOL 2840 SAMUEL SHEPARD DR. ST. LOUIS, MISSOURI 63103			
ARCHITECT: SANDRITZ & KOCKORIS, INC. 10428 OLIVE DRIVE ST. LOUIS, MO. 63143 ST. LOUIS, MISSOURI 63143-3478			



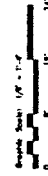
Third Floor Plan
Scale: 1/8" = 1'-0"

11/15

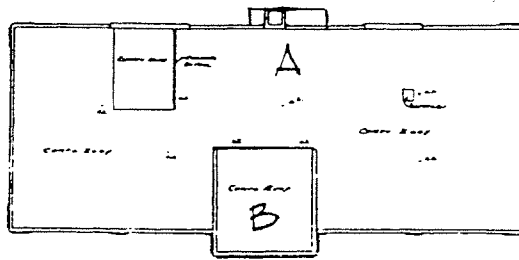
NO. DRAWN	
DATE	
BY	
CHECKED	
BANNER SCHOOL 2840 SAUNDERS SHEPARD DR. ST. LOUIS, MISSOURI 63103	
MADE BY: HANCOCK & COOPER, INC. 1928 S.W. 4th St. Ft. Lauderdale, FL 33304	



Fourth Floor Plan
Scale: 1/8" = 1'-0"



SW1



PLAN
SCALE: 1/64" = 1'-0"

BANNER

A- CLASSROOMS

B- PENTHOUSE

BANNER

BANNER