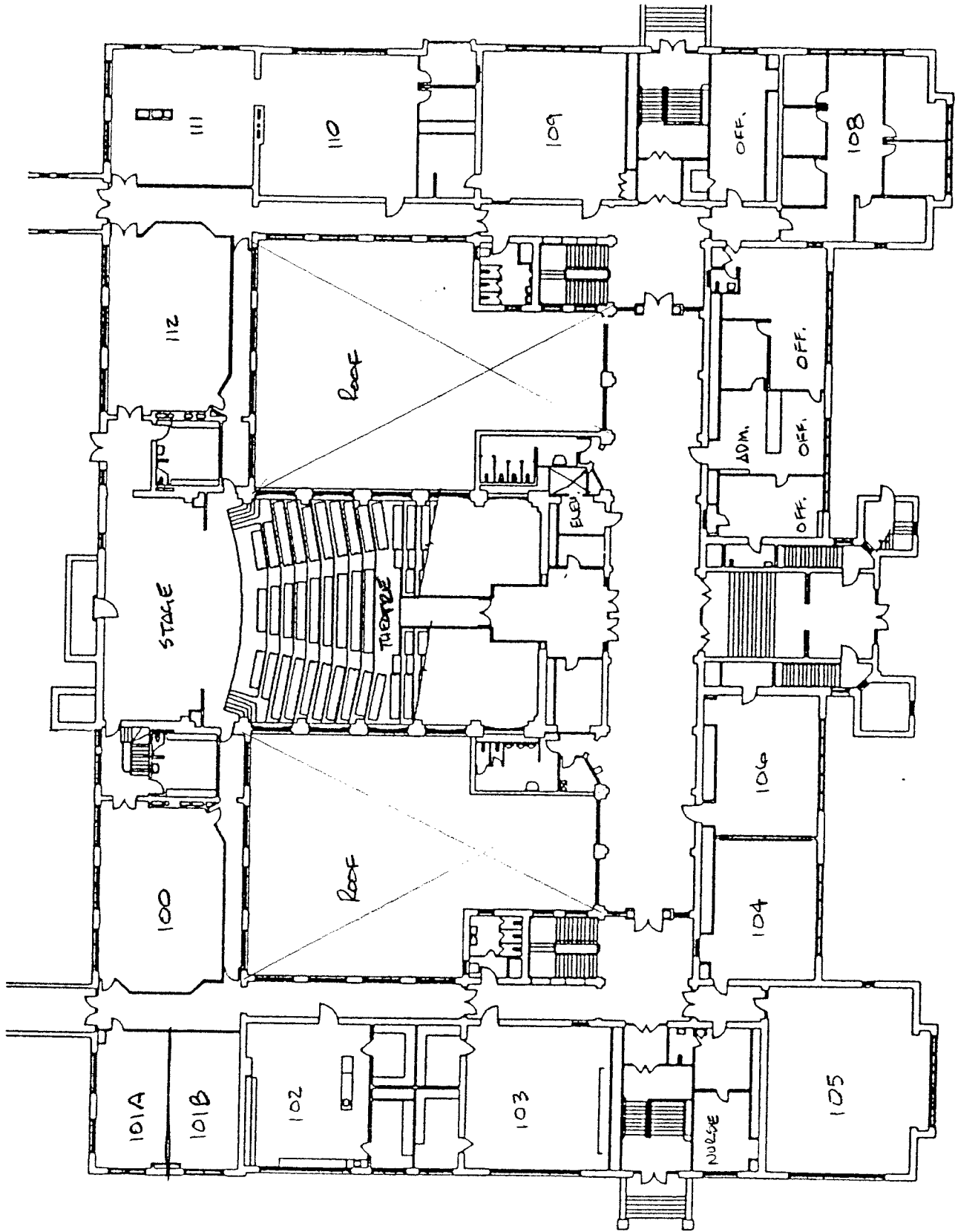




GROUND FLOOR PLAN
SCALE 1/8" = 1'-0"

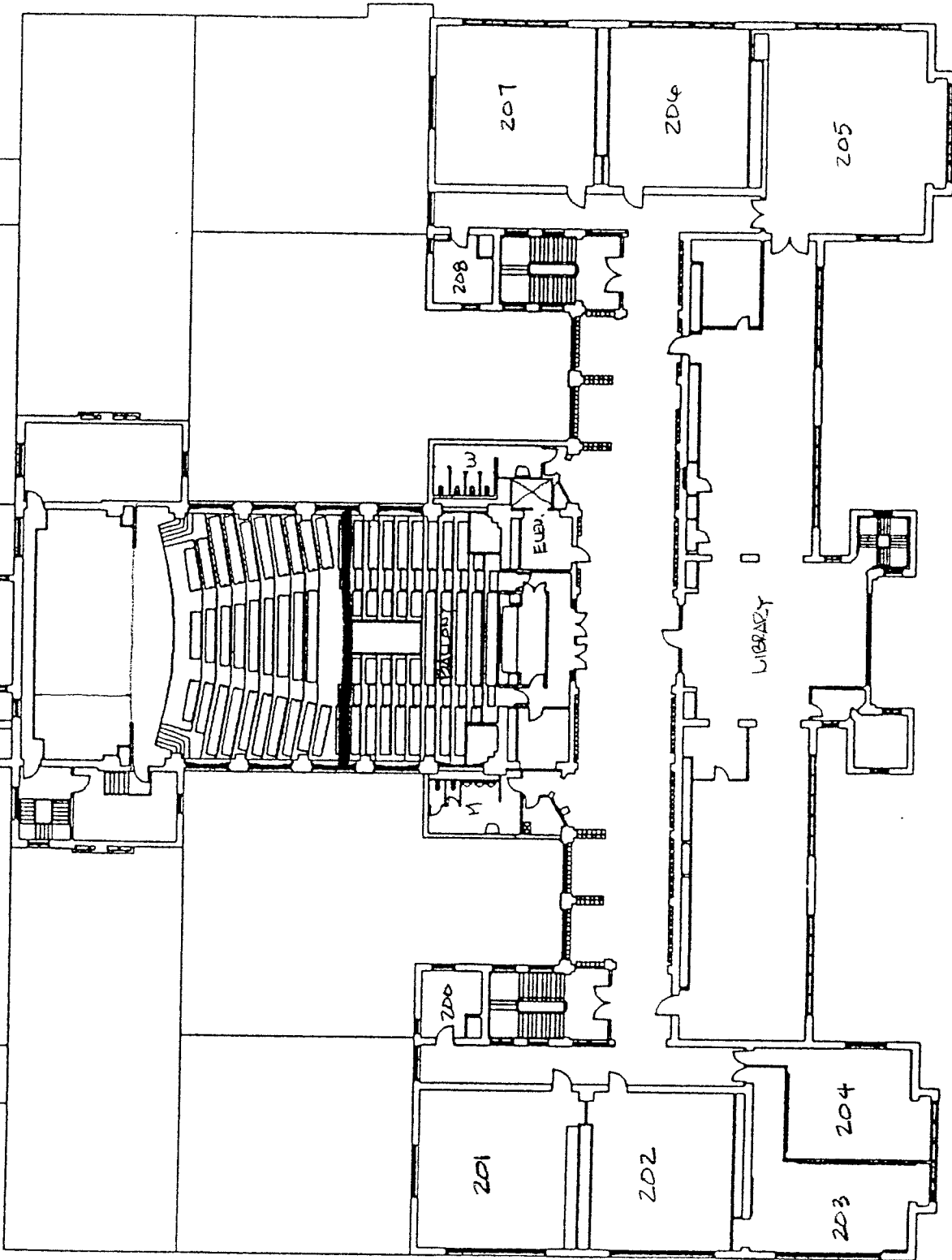
GROUND FLOOR
(CORRECTED Rm. #'s)



FIRST FLOOR PLAN
SCALE 1/8" = 1'-0"

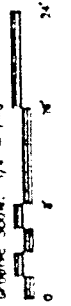


1ST FLR. PLAN
(CORRECTED Rm. #'s)
CENTRAL HALL, SCHEMATIC



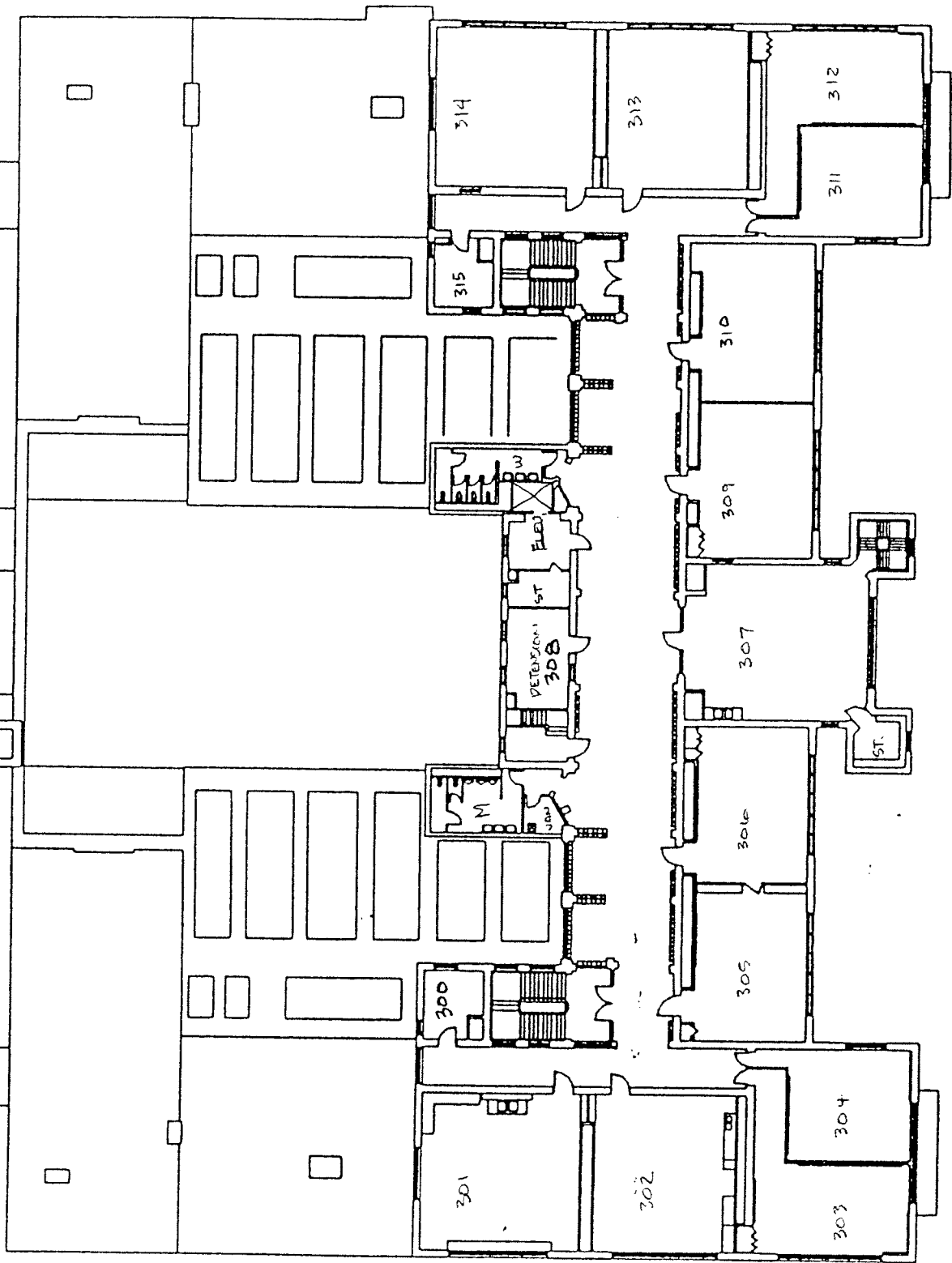
SECOND FLOOR PLAN

SCALE 1/8" = 1'-0"



M-114

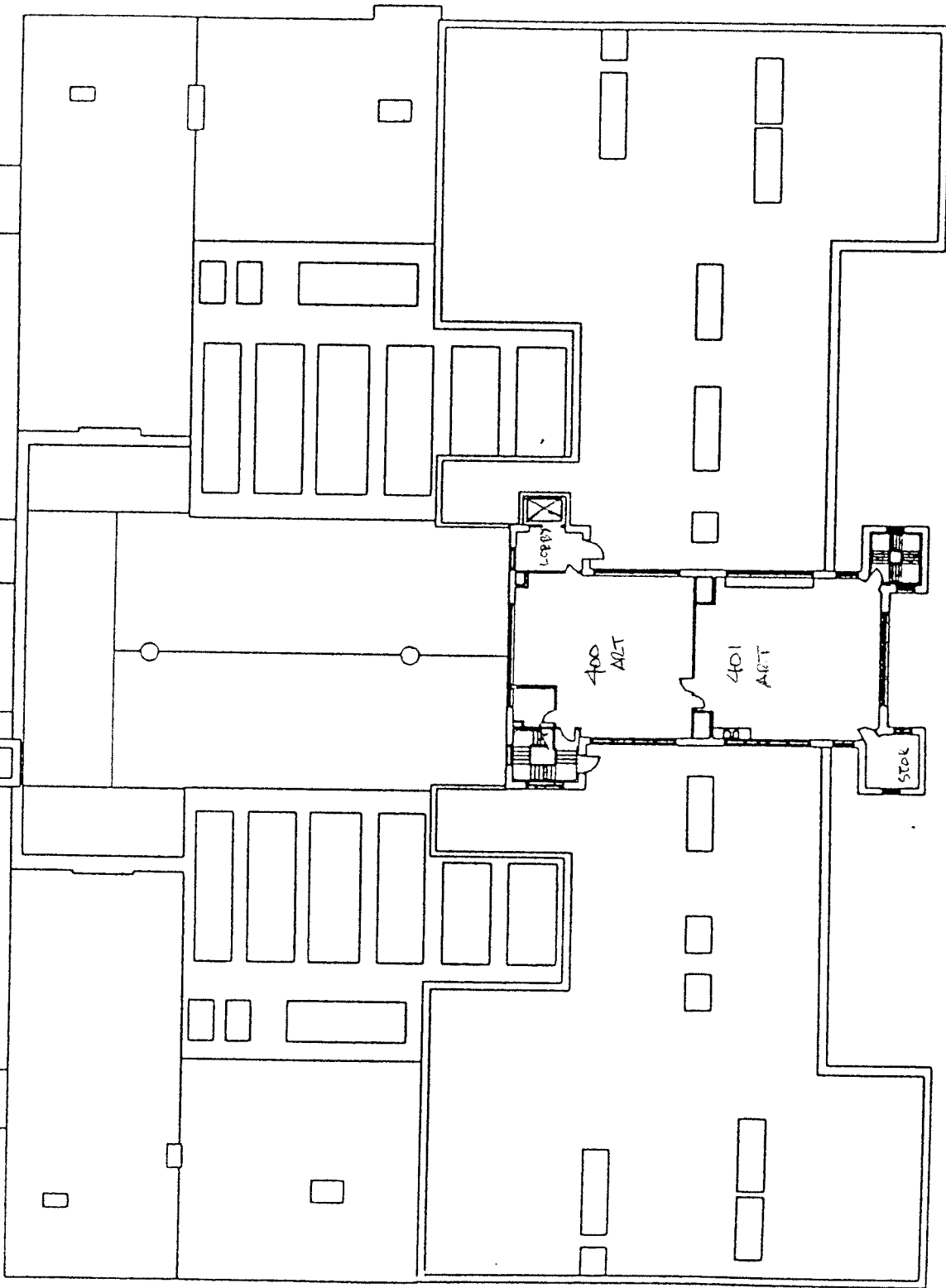
2ND FLR. PLAN
 (CORRECTED Rm. #'s)
 CENTRAL ILLINOIS STATE UNIV.



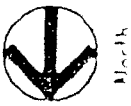
THIRD FLOOR PLAN
SCALE 1/8" = 1'-0"



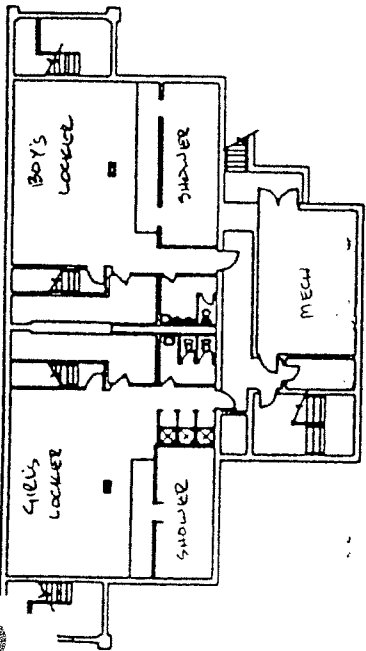
3RD FLR. PLAN
(CORRECTED Rm. #s)
CENTRAL HOUSE PLAN



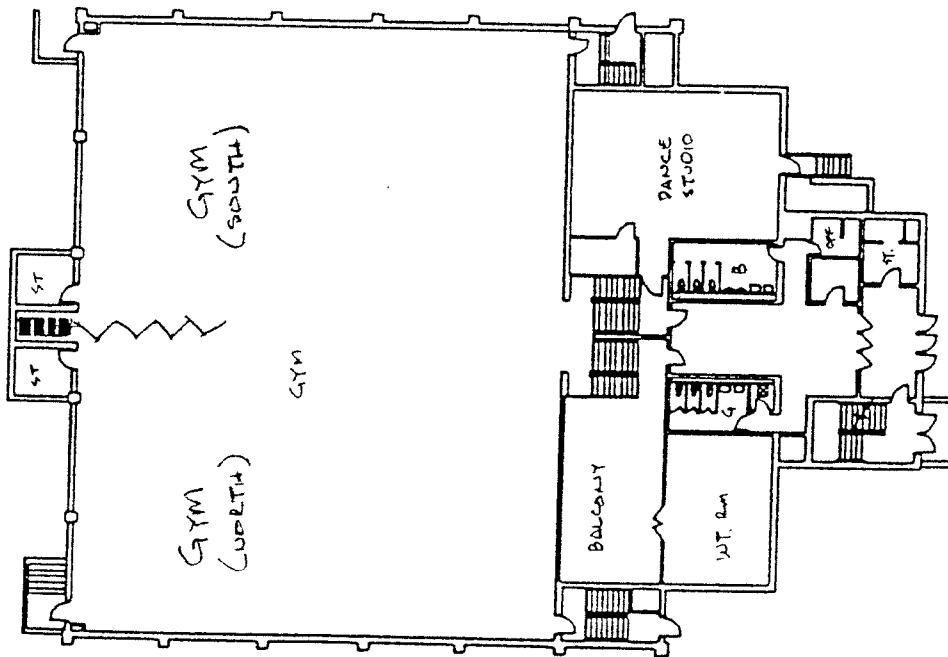
FOURTH FLOOR PLAN
SCALE 1/8" = 1'-0"



4TH FLOOR PLAN
(CORRECTED Rm. #'S)
COURTESY OF THE ARCHITECT

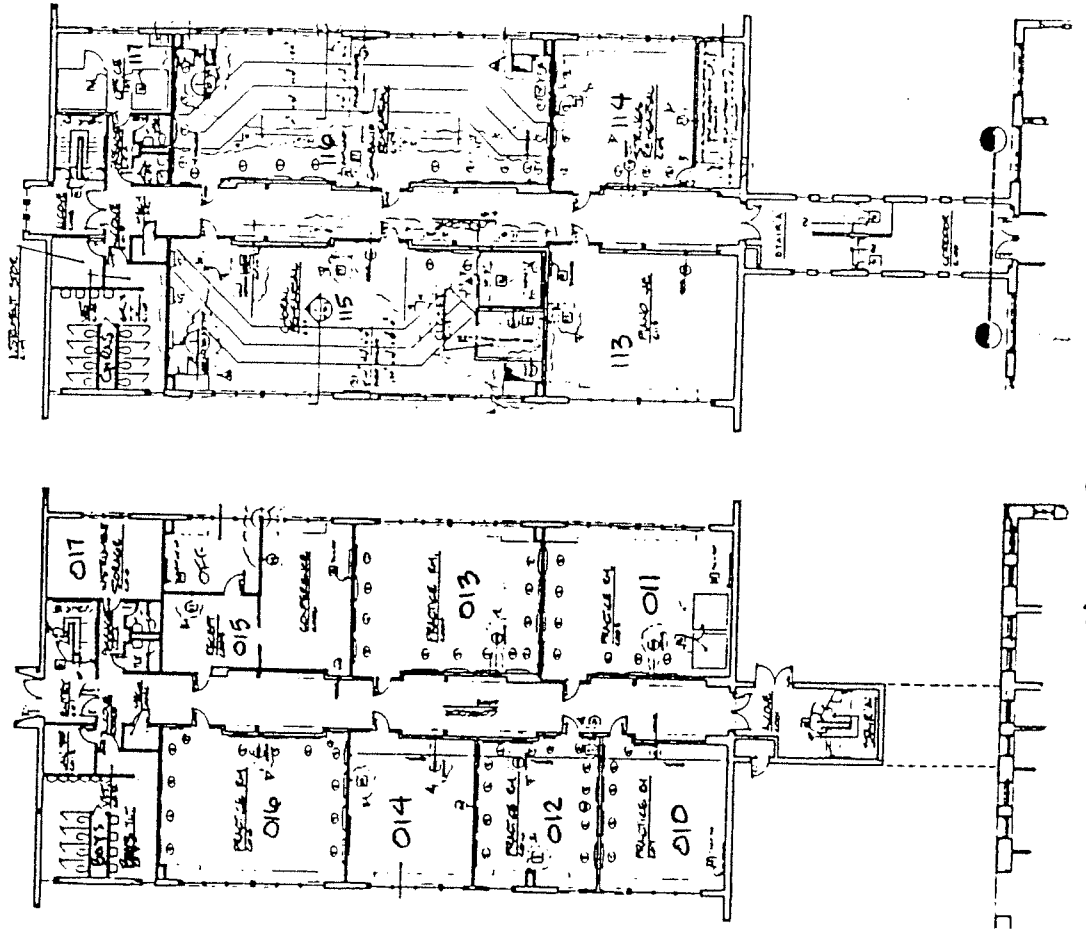


2ND FLR



Graphic Scale: 1" = 1'-0"

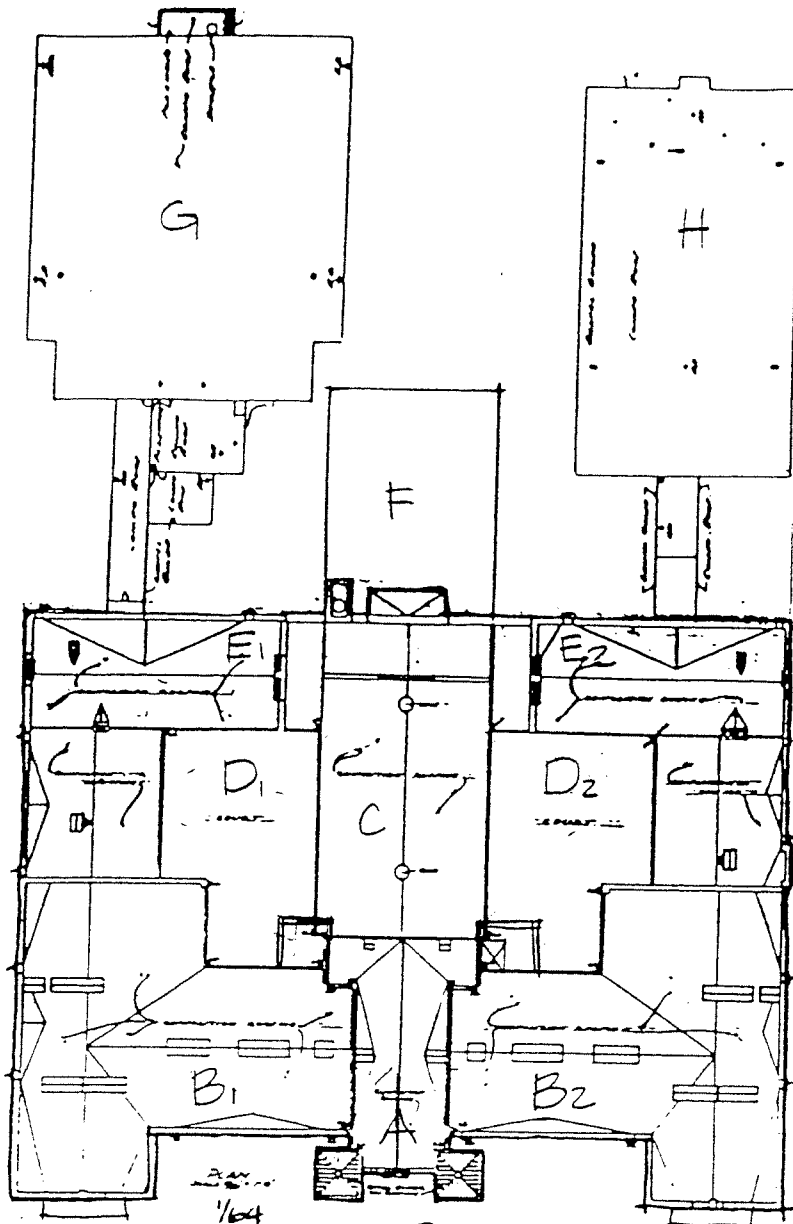
1ST FLR



2ND FLR

1ST FLR MUSIC BLDG.

(Corrected Rm. #'s)



Roof Plan
CENTRAL HIGH SCHOOL - 71,000 SF.

CENTRAL (FEATMAN) HIGH SCHOOL
 J. G. & B. ARCHITECTS
 SCALE: 1/64" = 1'-0"

A - PENTHOUSE

B_{1,2} - CLASSROOMS

C - AUDITORIUM

D_{1,2} - LITE COURTS

E_{1,2} - CLASSROOMS

F - STORAGE

● - GYM

H - MUSIC Rms.

Ⓜ CENTRAL HIGH SCHOOL