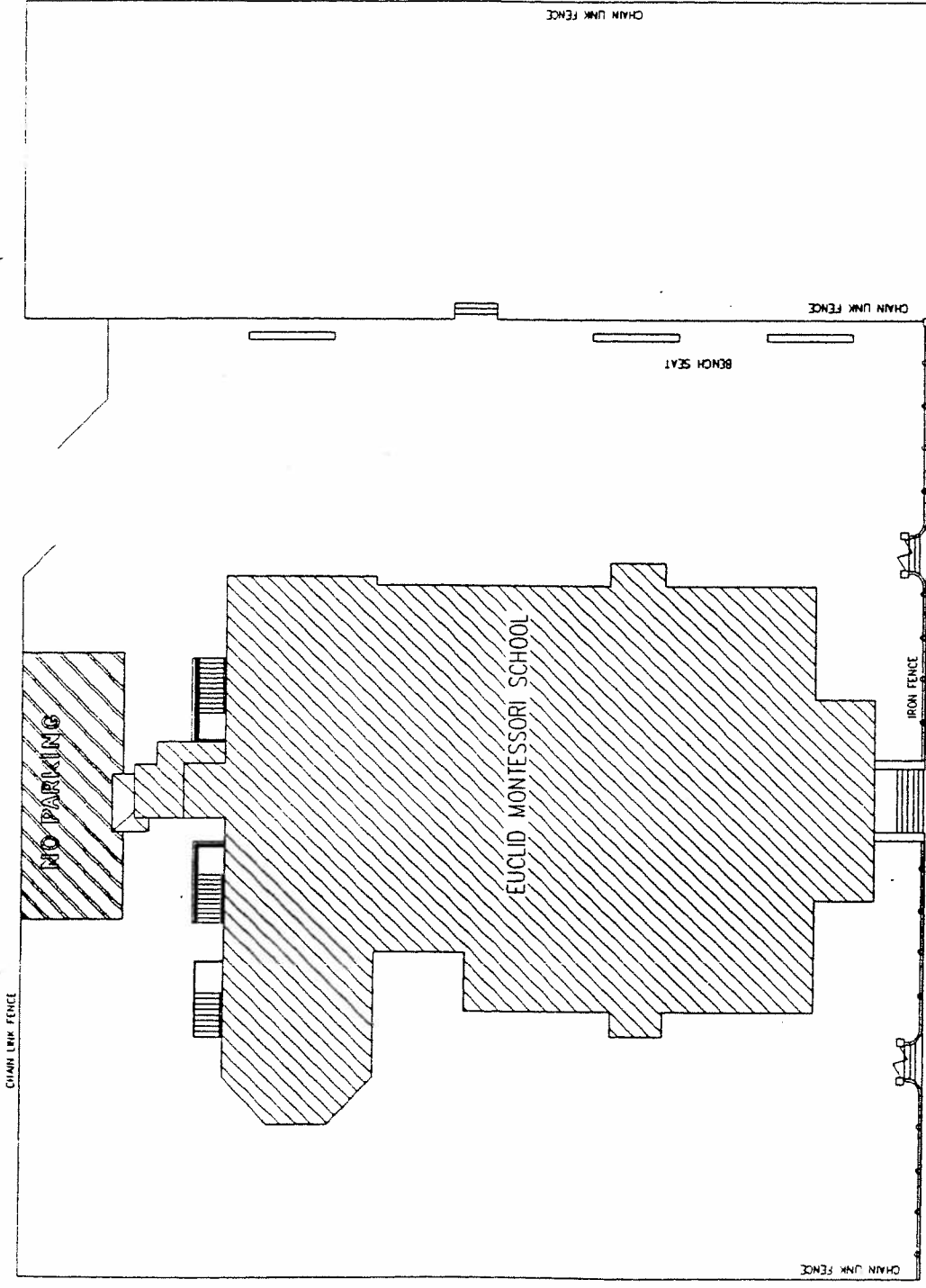


DATE		DRAWN		CHECKED		REVISIONS DATE DESCRIPTION 11/31 M. EUCLID AVENUE ST. LOUIS, MISSOURI 63113 EUCLID-MONTESSORI ELEMENTARY SCHOOL	NO. PACKAGE LETTING NO. NO. DATE FILE NO. SHEET NO.

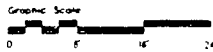
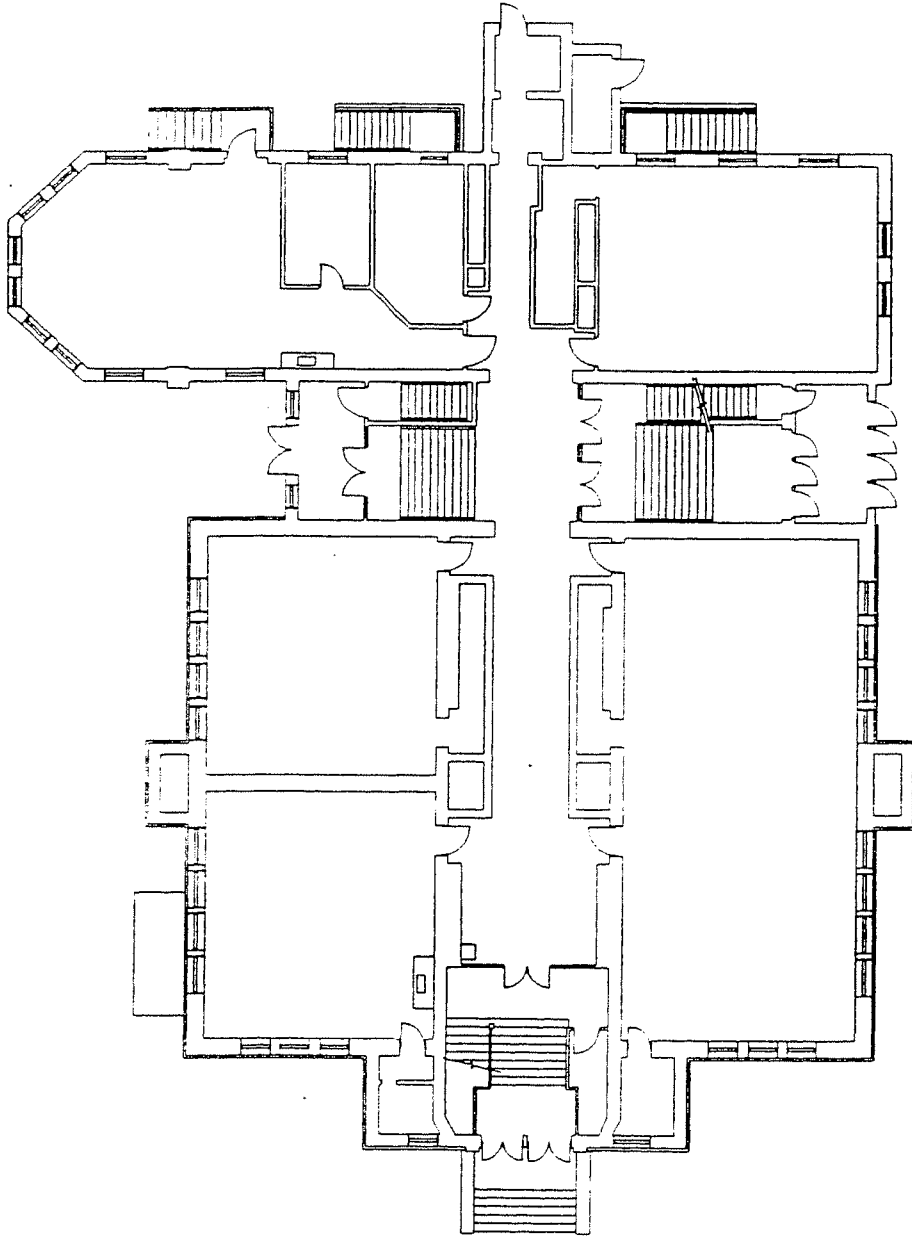


EUCLID AVENUE



CID NO. 13H

EUCLID

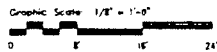
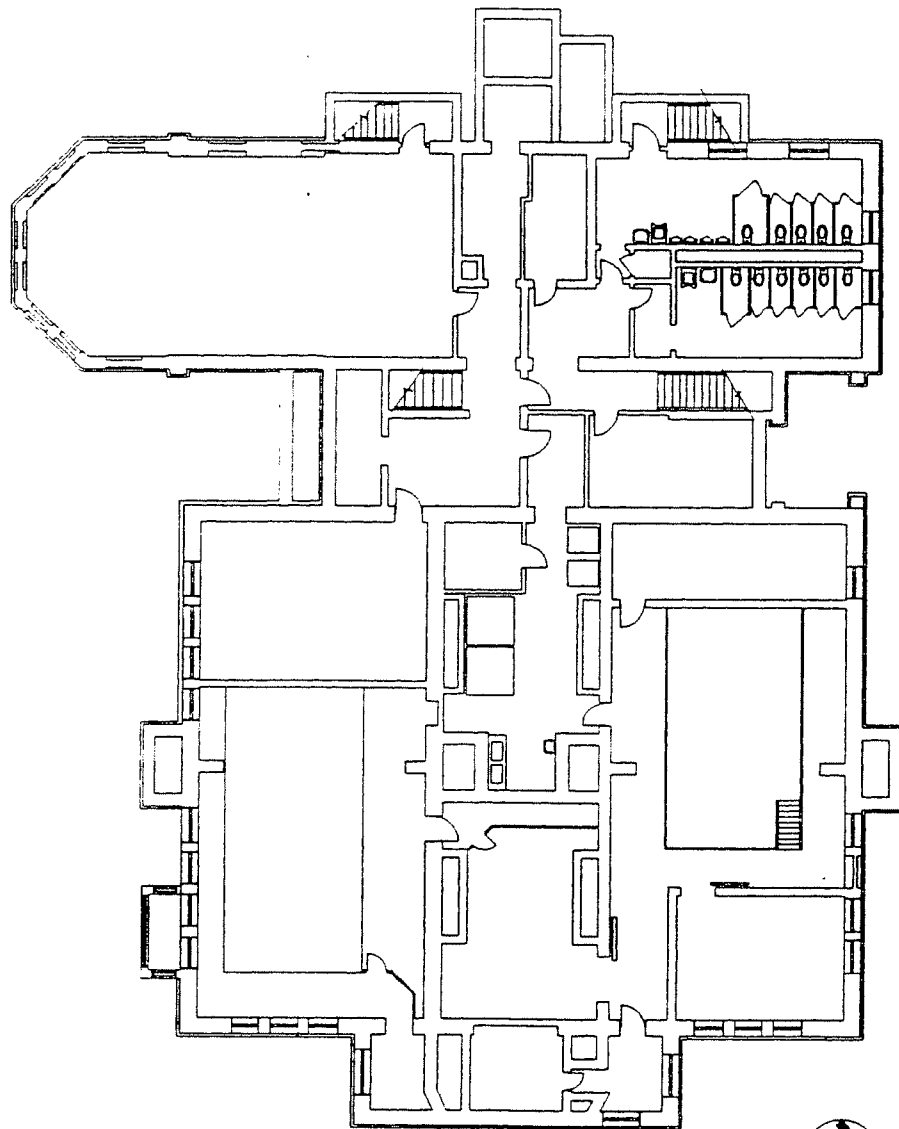


FIRST FLOOR PLAN



CID NO: 13H

SEAL			
EUCLID-MONTESSORI ELEMENTARY SCHOOL 1131 N. EUCLID AVENUE ST. LOUIS, MISSOURI 63113		DATE DESIGNED	DATE DRAWN
		CHECKED	
REVISIONS			
DATE		DESCRIPTION	
BID PACKAGE			
LETTING No.			
BID DATE			
FILE No.			
SHEET No.			



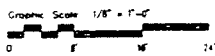
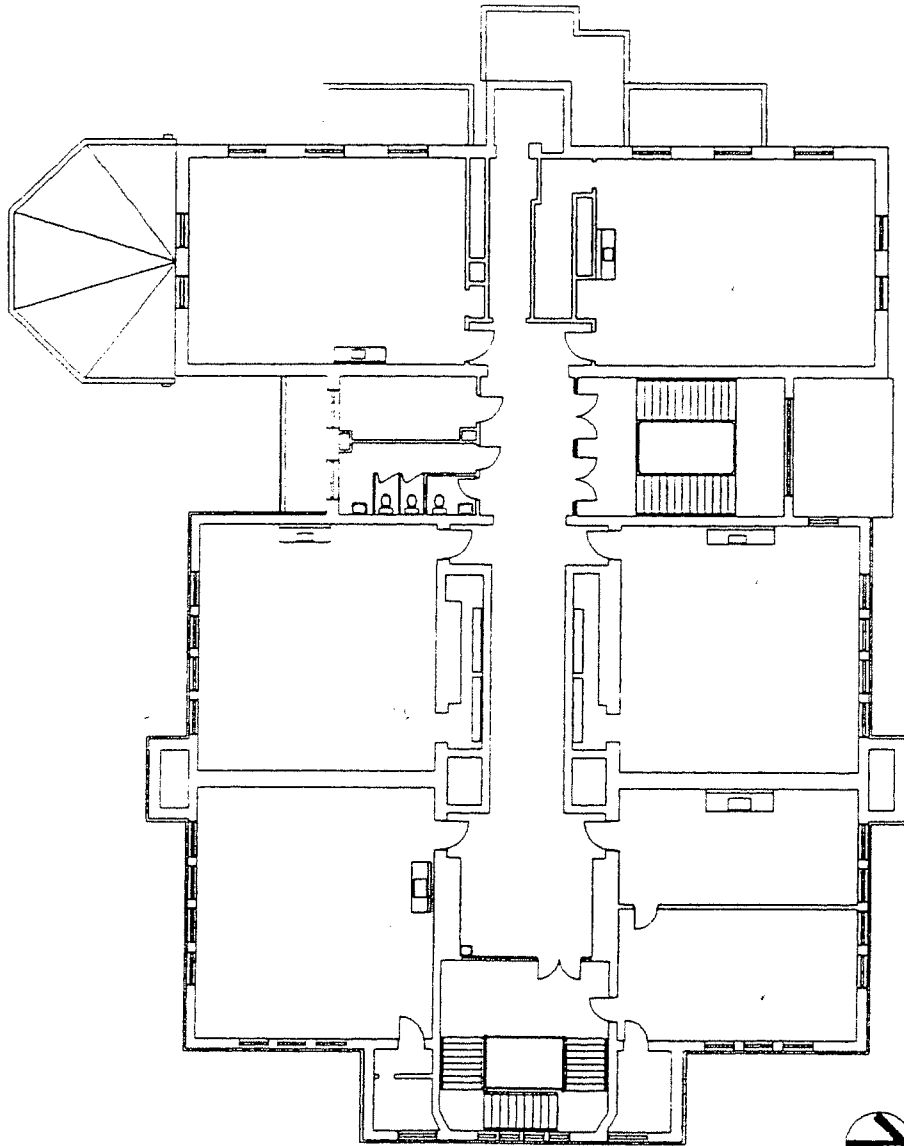
CID NO: 13H

BASEMENT FLOOR PLAN
SCALE: 1/8" = 1'-0"

Drawing prepared and designed by [unreadable] © [unreadable] 1978. File: [unreadable]

SEAL	
EUCLID-MONTESSORI ELEMENTARY SCHOOL 1131 N. EUCLID AVENUE ST. LOUIS, MISSOURI 63113	
DATE	CHECKED
DESIGNED	DRAWN
REVISIONS DATE DESCRIPTION	
BID PACKAGE	
LETTING No	
BID DATE	
FILE No	
SHEET No	

Drawing prepared and designed by: **Harold R. Anderson, Inc.** (314) 867-2726 - Fax (314) 867-3417

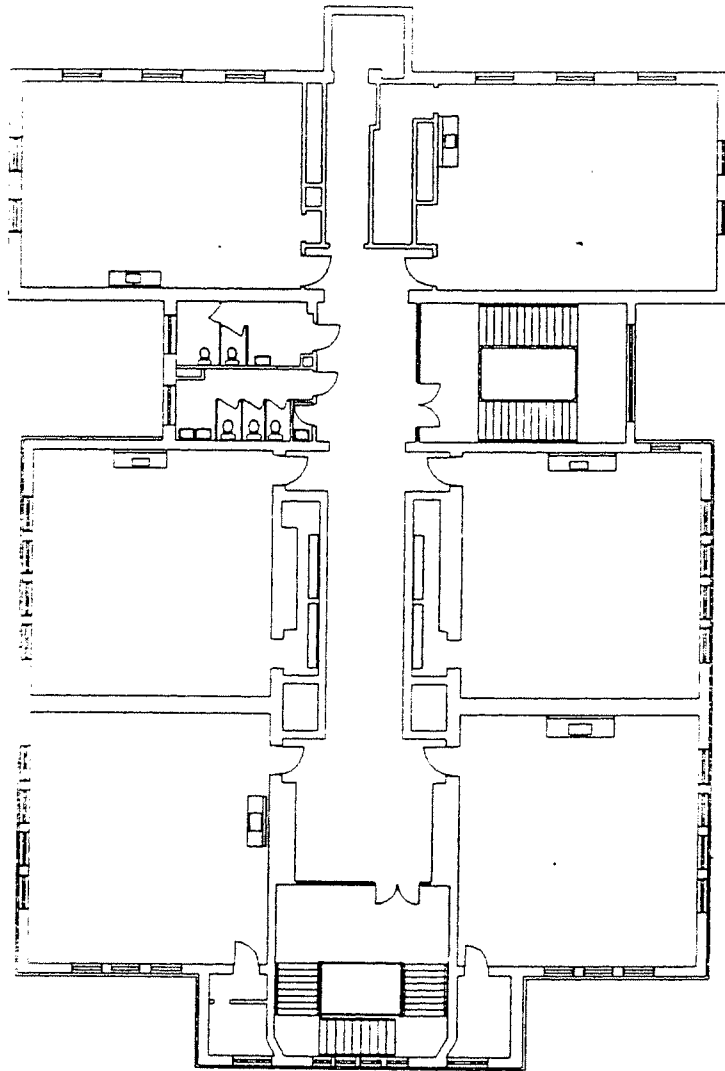


CID NO: 13H

SECOND FLOOR PLAN
 SCALE: 1/8" = 1'-0"

SEAL					
EUCLID-MONTESSORI ELEMENTARY SCHOOL 1131 N. EUCLID AVENUE ST. LOUIS, MISSOURI 63113					
DATE	DESIGNED	DRAWN	CHECKED		
REVISIONS					
DATE	DESCRIPTION				
BID PACKAGE					
LETTING No					
BID DATE					
FILE No					
SHEET No					

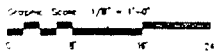
Drawing prepared and checked by: *[Signature]* Date: (11/13/87)



↑
FRONT



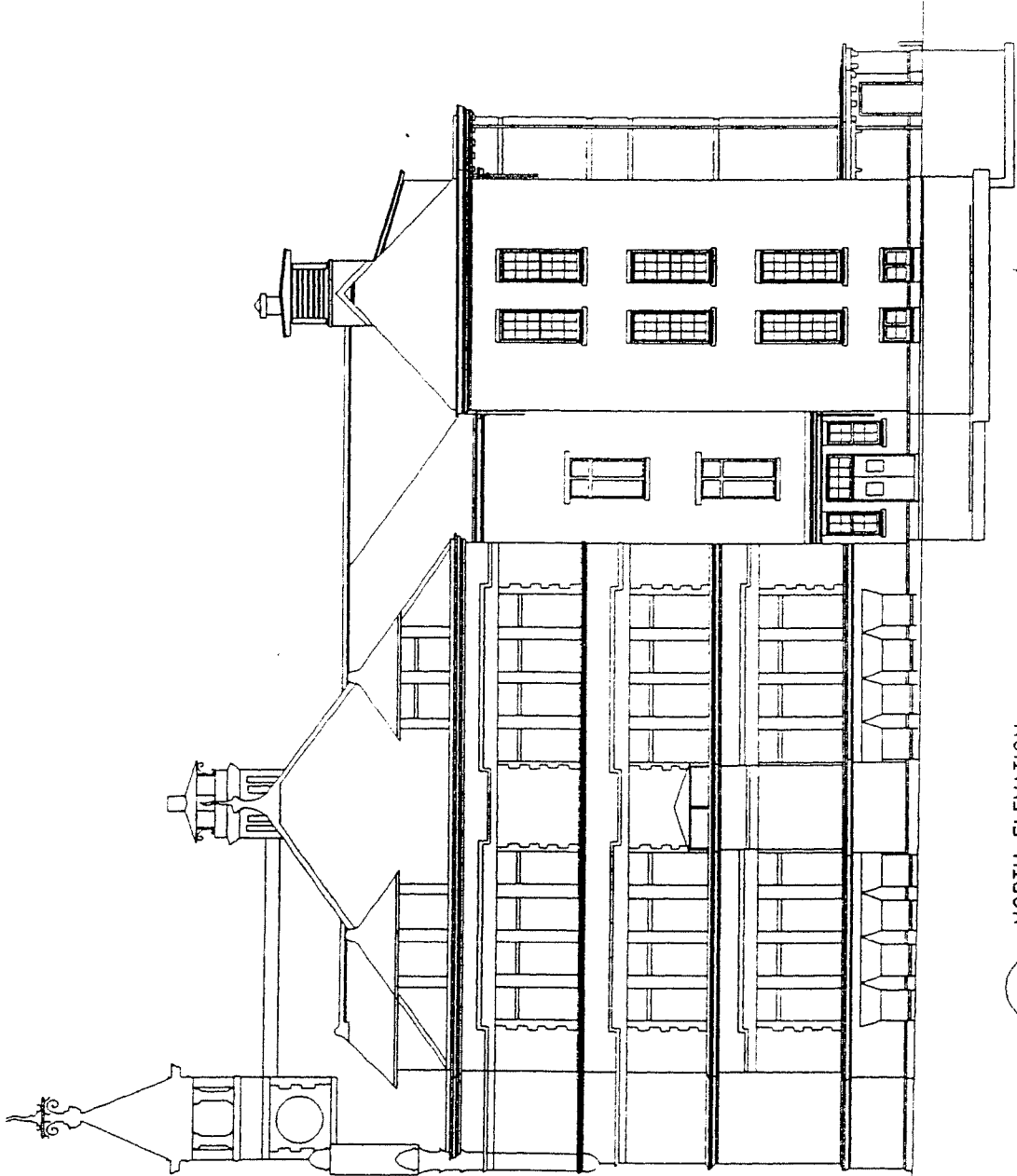
North



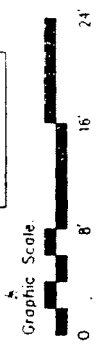
CID NO: 3H

THIRD FLOOR PLAN
 SCALE: 1/8" = 1'-0"

SCALE					
EUCLID-MONTESSORI ELEMENTARY SCHOOL 1131 N. EUCLID AVENUE ST. LOUIS, MISSOURI 63113					
DATE	DESIGNED	DRAWN	CHECKED		
REVISIONS					
DATE	DESCRIPTION				
BID PACKAGE					
LETTING No.					
BID DATE					
FILE No.					
SHEET No.					



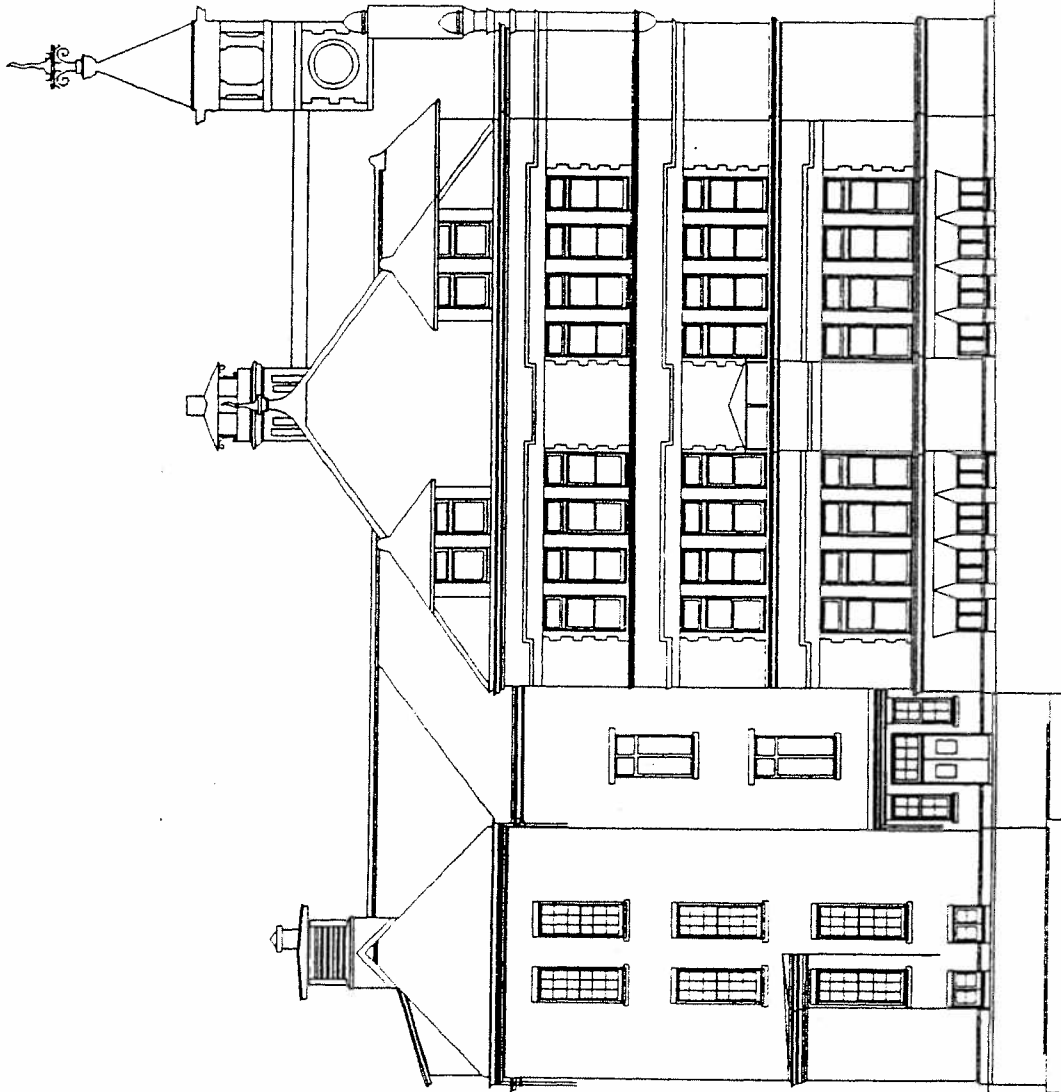
NORTH ELEVATION
SCALE: 1/8" = 1'-0"



NO. DRAWING	DATE	DESIGNED BY	CHECKED BY
11119	11/11/19	ST. LOUIS, MISSOURI 63113	
EUCLED - MONTESSORI			
1131 W. EUCLED AVE.			
ST. LOUIS, MISSOURI 63113			
NO. FLOOR	DATE	BY	SCALE

CID NO: 13H

DATE	DESIGNED	BY	DATE	REVISIONS
	CHECKED	BY	DATE	DESCRIPTION
EUCUD-MONTESSORI 1131 W. EUCUD AVE. ST. LOUIS, MISSOURI 63113				
80' PALACE SETTING No. BID DATE FILE No. DATE No.				



SOUTH ELEVATION

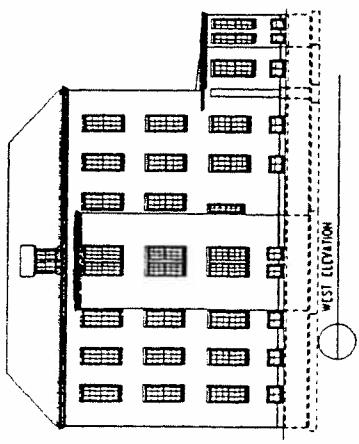
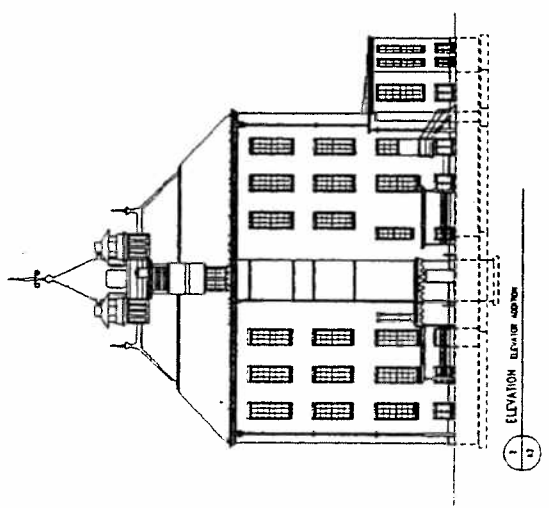
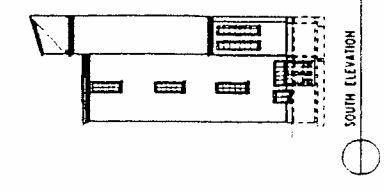
SCALE: 1/8" = 1'-0"

Graphic Scale.



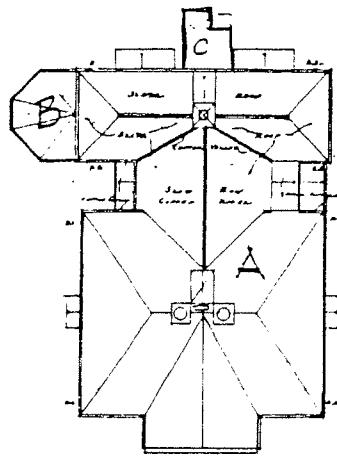
CID NO: 13H

DATE	DESIGNED BY	DRAWN	CHECKED	REVISIONS	DESCRIPTION	NO. PACKAGE	LETTING NO.	JOB DATE	SHEET NO.	SHEET IN.
20-CLIO-MONTESSORI				1131 N. EUCLID AVE.		ST. LOUIS, MISSOURI 63113				



CID NO: 13H





DOOR PLAN
 1/32
 EUCLID HOUSEHOLD
 10/10/1910

SC: 1/64" = 1'-0"

EUCLID SCHOOL

A - CLASSROOMS

B - KINDERGARTEN

EUCLID

EUCLID