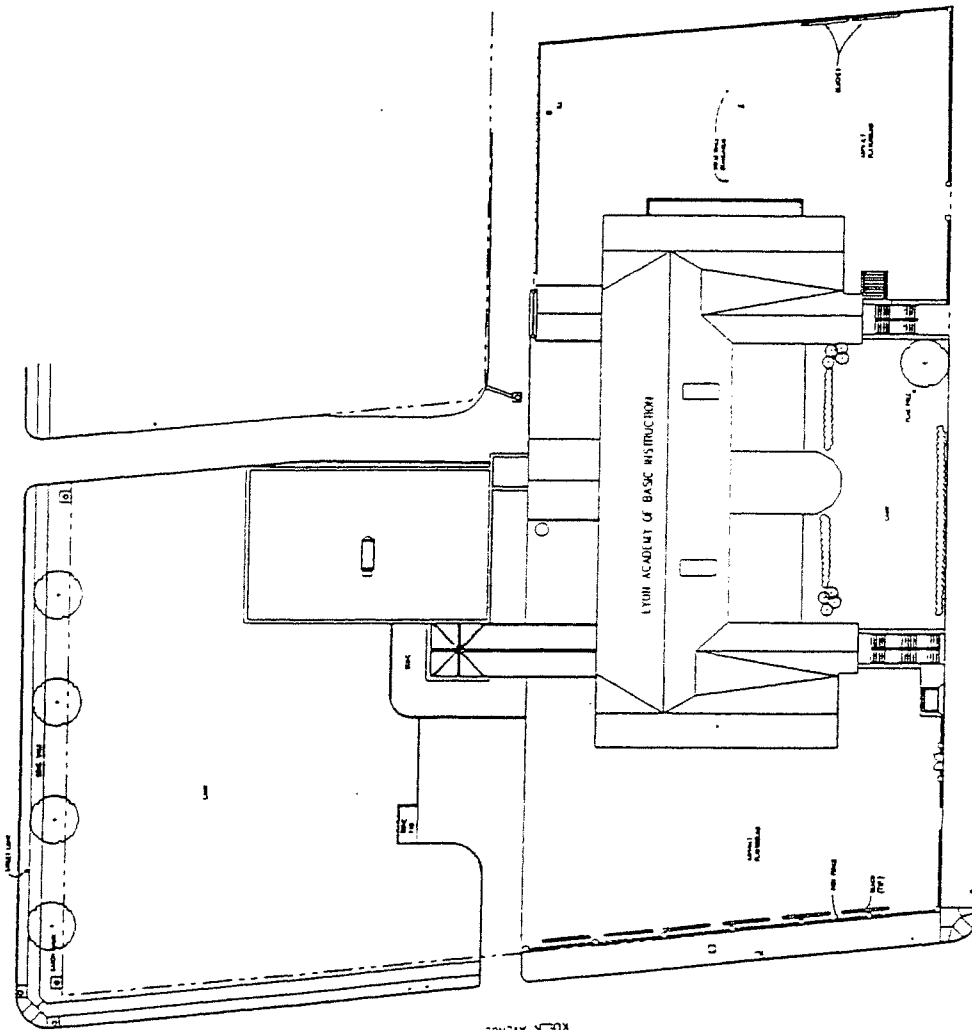


DATE	DESIGNED BY	CHECKED BY	SCALE
7/17/72	ST. LOUIS, MISSOURI	63111	
LYON ACADEMY			
7417 VERMONT AVENUE			
ST. LOUIS, MISSOURI 63111			
SUPERVISOR			
NO. 1000			
UTTING			
NO. 1000			
NO. 1000			
NO. 1000			

ALABAMA AVENUE



17 5 5 3 3

LYON

⊕ SITE PLAN  
SCALE: 1/8" = 1'-0"



CID: 85B

PROJECT NO.	DATE	DESIGNED BY	CHECKED BY
7417 VERMONT AVENUE ST. LOUIS, MISSOURI 63111			
LYON ACADEMY			
DATE	BY	DATE	BY

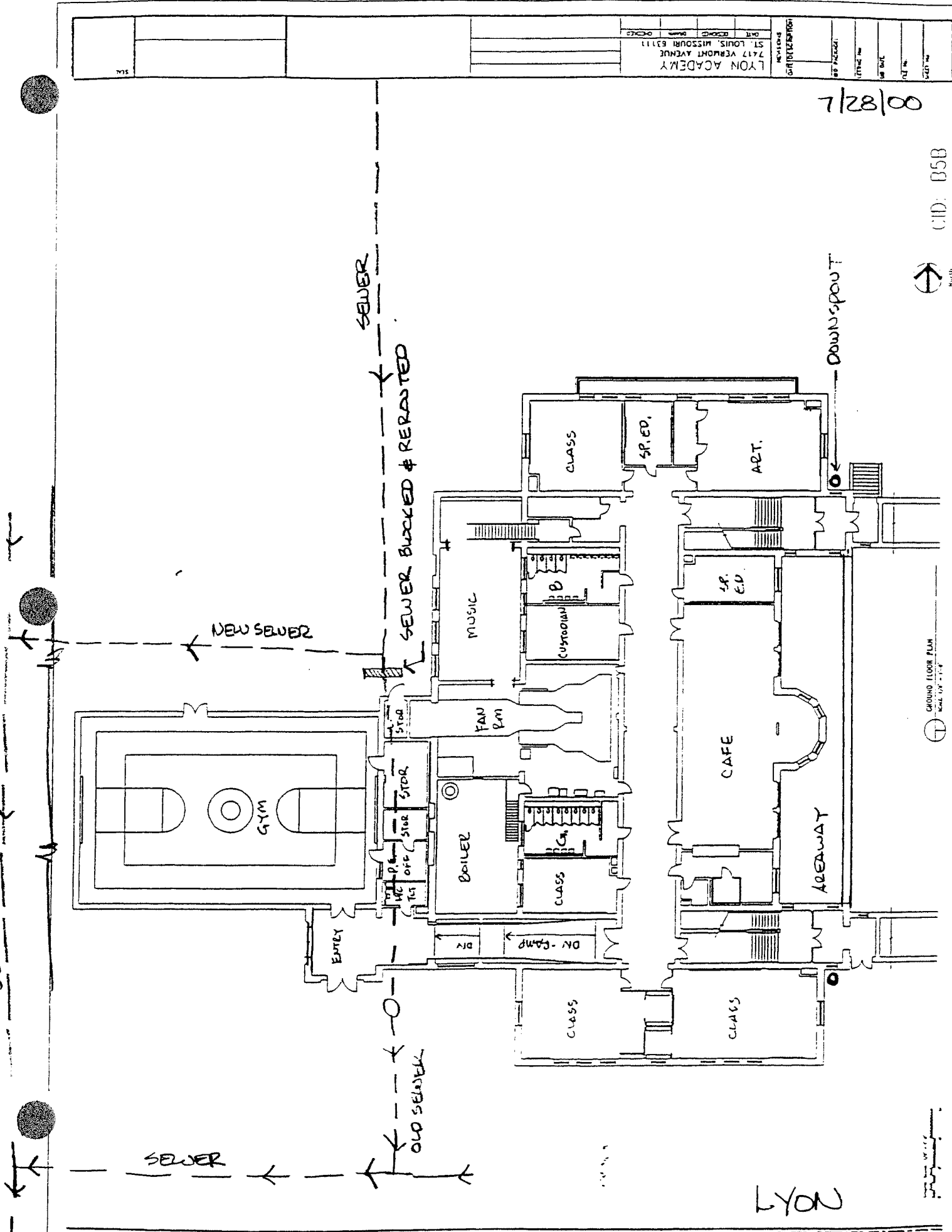
00/82/00

CID: B5B



GROUND FLOOR PLAN  
SCALE 1/4" = 1'-0"

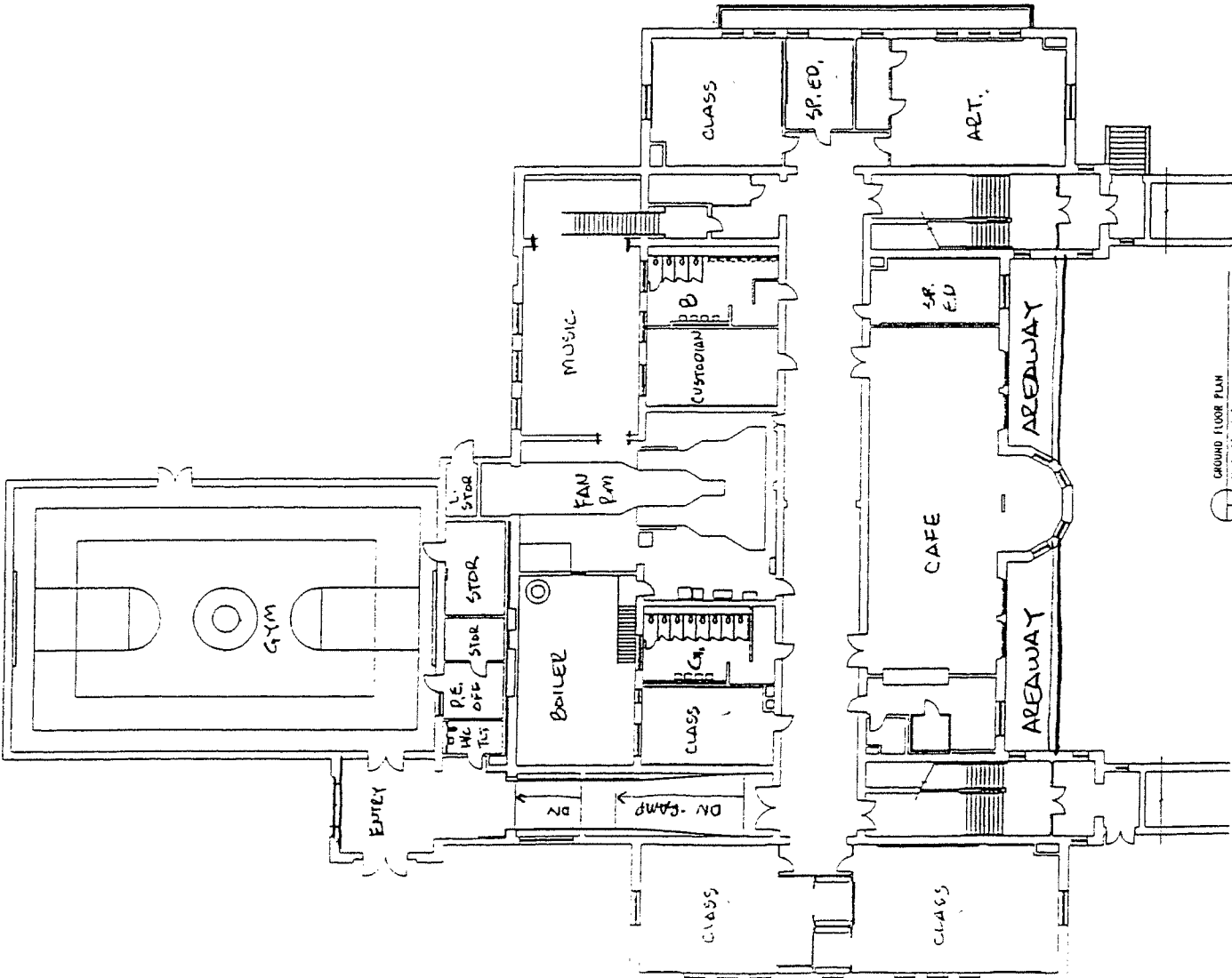
LYON



DATE	CHECKED	DRAWN	CHECKED
REVISIONS INTERPRETATION			
LYON ACADEMY 7417 VERMONT AVENUE ST. LOUIS, MISSOURI 63111			
PROJECT NO.			
DATE			
SCALE			
DATE			

CID: B5B

↑  
NORTH



GROUND FLOOR PLAN  
SCALE: 1/8" = 1'-0"

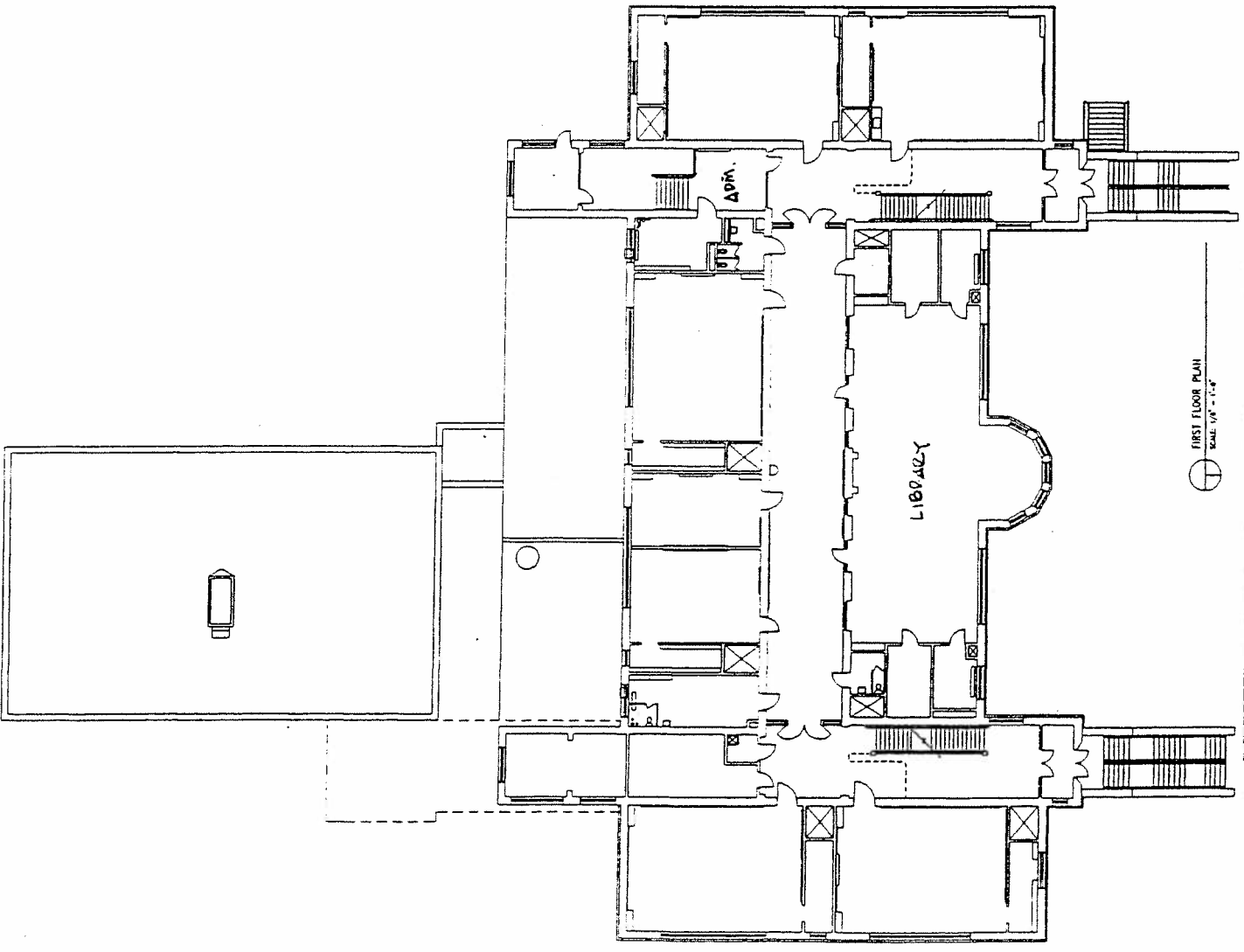


REVISIONS		DATE		DESCRIPTION	
NO.	DATE	BY	DATE	DESCRIPTION	BY

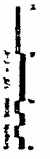
LYON ACADEMY  
7417 VERMONT AVENUE  
ST. LOUIS, MISSOURI 63111

PROJECT No.  
SHEET No.  
JOB DATE  
DATE  
JOB PACKAGE

CID: B5B

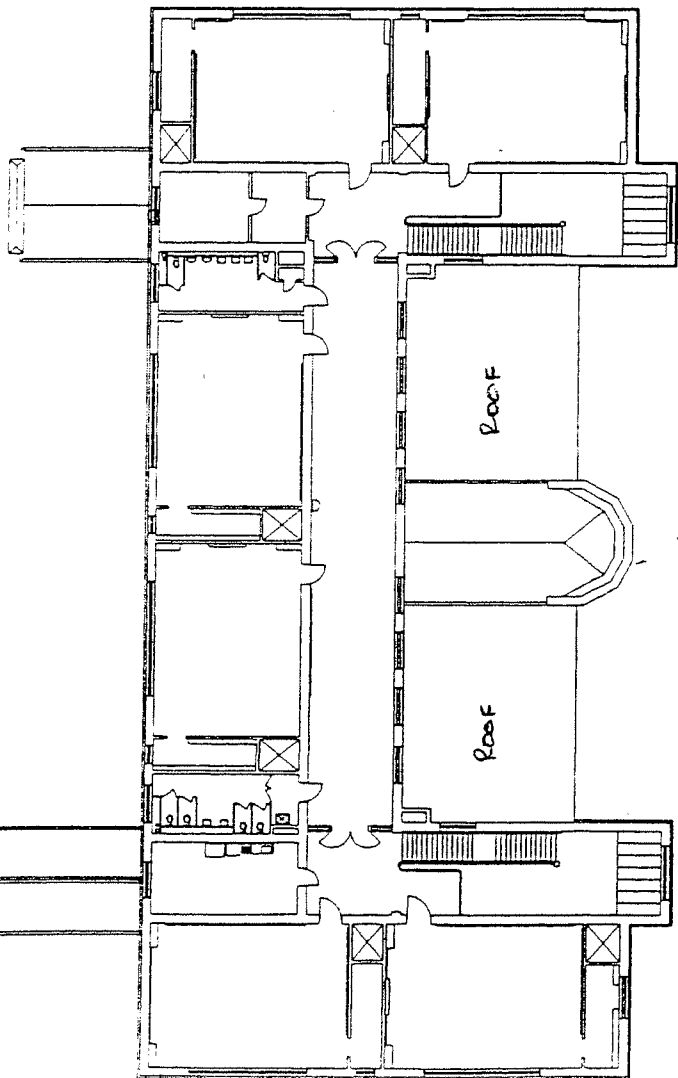


FIRST FLOOR PLAN  
SCALE: 1/8" = 1'-0"



DATE	DESIGNED BY	CHECKED BY
7/17/88	ST. LOUIS, MISSOURI 63111	
PROJECT		
L'YON ACADEMY		
7417 VERMONT AVENUE		
ST. LOUIS, MISSOURI 63111		
DRAWN BY		
DATE		
SCALE		
SHEET NO.		
TOTAL SHEETS		

CID: B5B

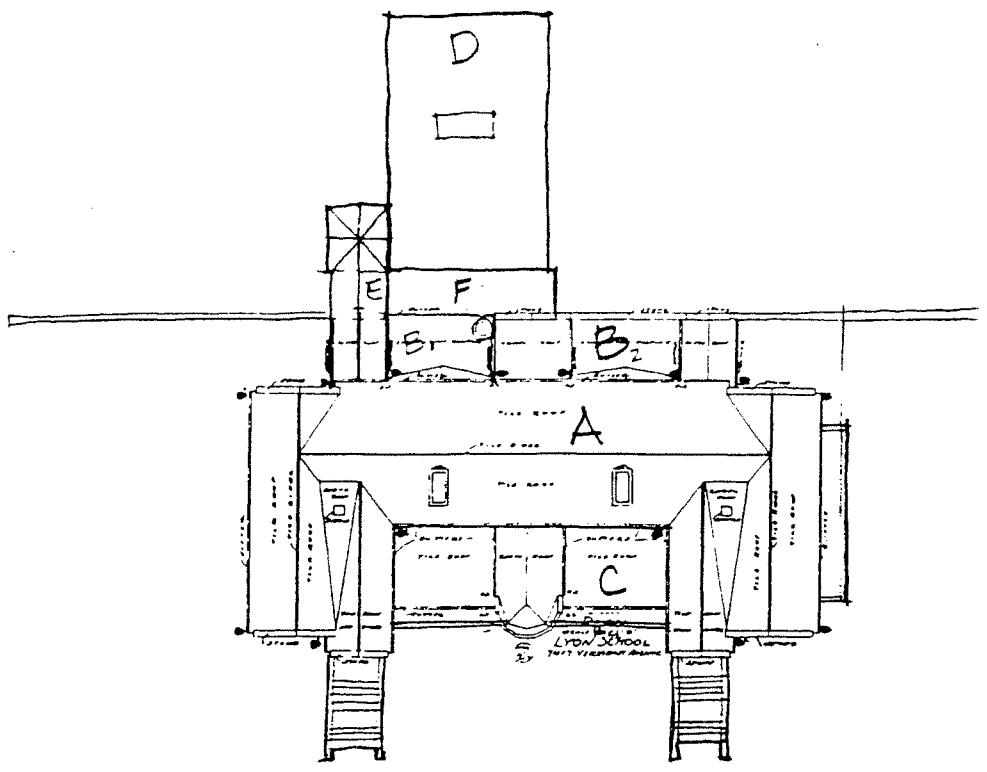


SECOND FLOOR PLAN  
SCALE: 1/8" = 1'-0"

Copyright © 1988 by [unreadable]

# LYON SCHOOL

- A - ORIG. BLDG
- B - FLAT ROOFS
- C - LIBRARY
- D - GYM
- E - CONNECTOR



LYON