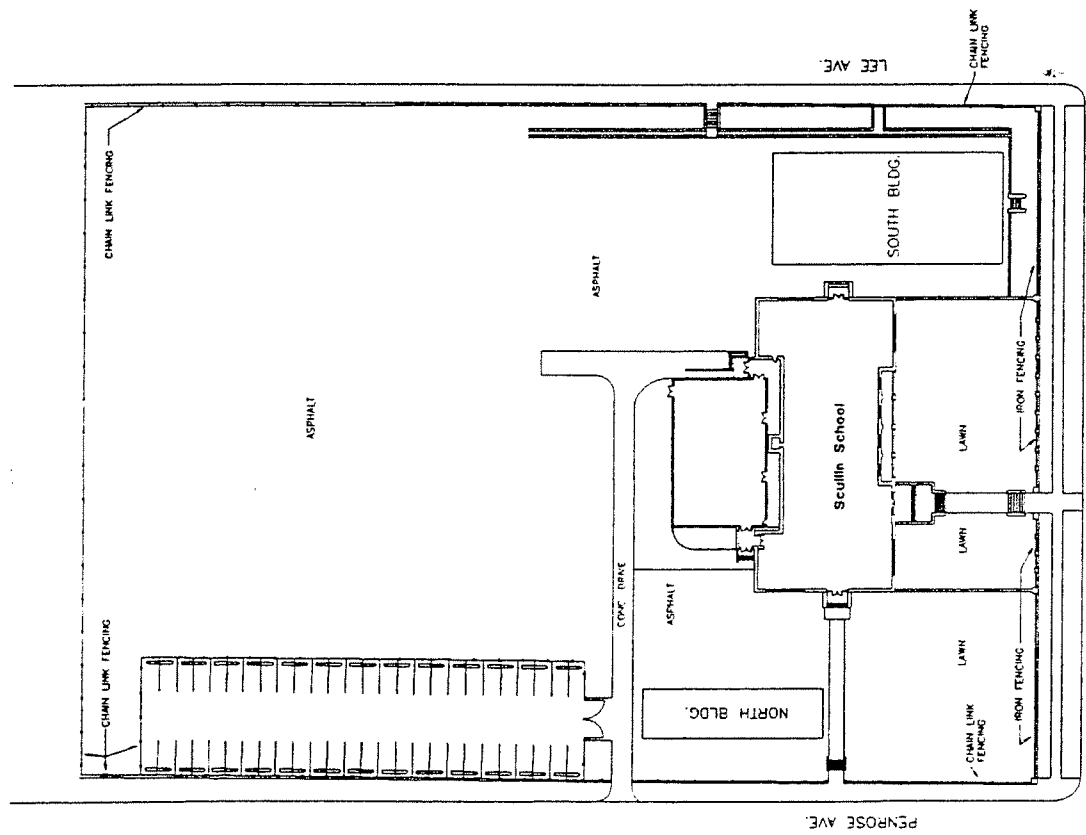


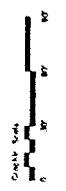
DATE	CHECKED	DRAWN	CHECKED
11/10/2011			
SCULLIN SCHOOL 4160 Kingshighway St Louis, Missouri 63113			
PROJECT NO.			
SHEET NO.			
DATE			
DRAWN BY			
CHECKED BY			



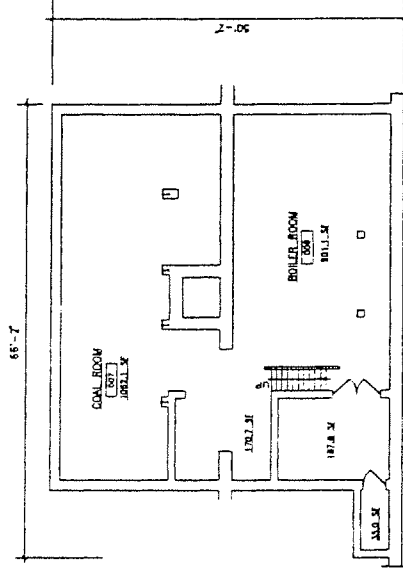
IME



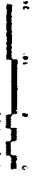
Site Plan
Scale: 1" = 30'-0"



DATE	DESIGNED	DATE	PROJECT
	DRAWN	CHECKED	NO. DRAWING
SCULLIN SCHOOL 4160 N. Kingshighway St. Louis, Missouri 63113			
WALTERS, SIMONET & ASSOCIATES, INC. 1824 OLD GLENVIEW ST. NO. 3016 ST. LOUIS, MO. 63114 (314) 347-1999			



Coal and Boiler Room Plan
Scale: 1/8" = 1'-0"

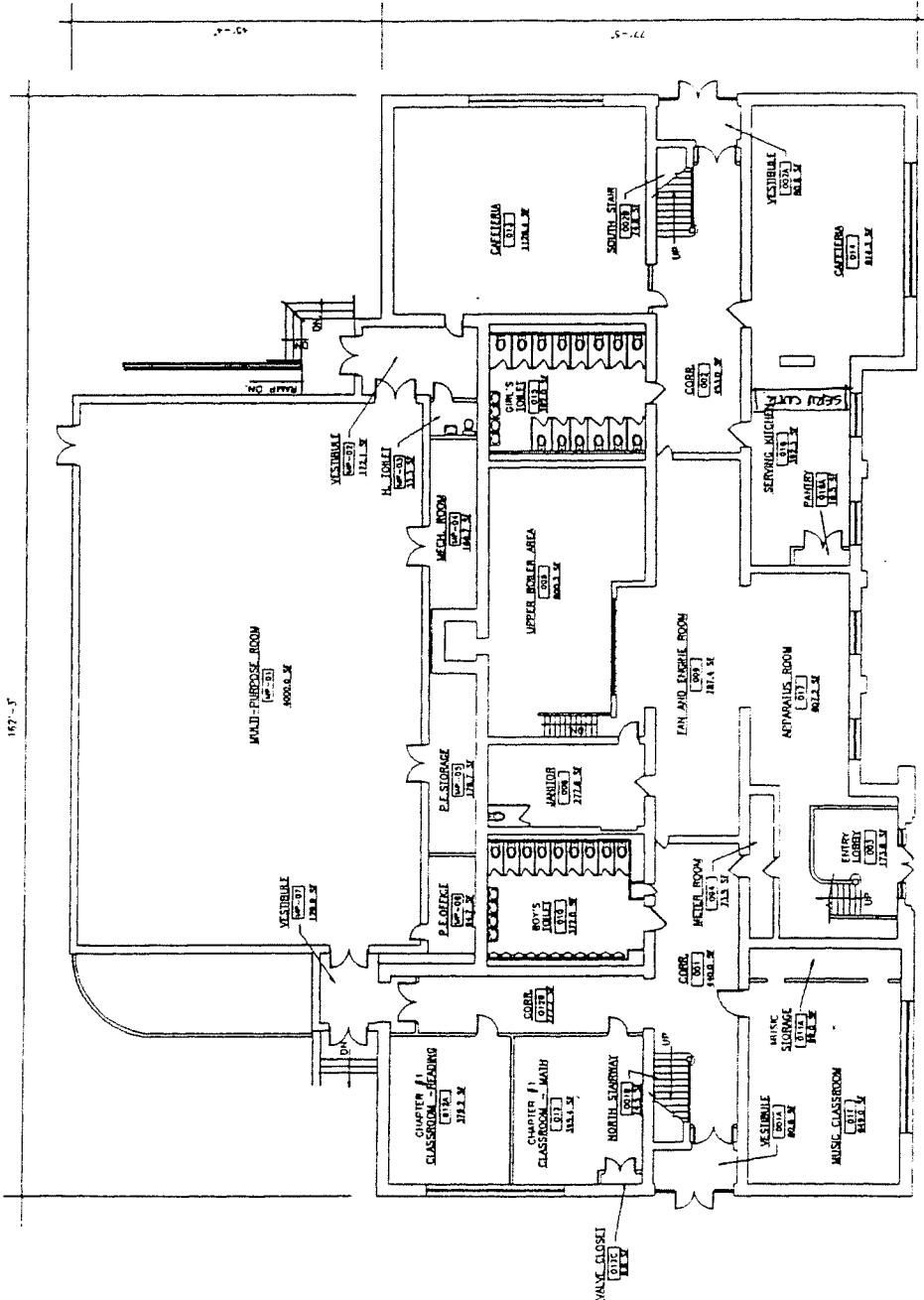


AME

DATE: 10/15/87	PROJECT: SCULLIN SCHOOL	SCALE: 1/8" = 1'-0"
DESIGNED BY: [Redacted]	CONTRACT NO. [Redacted]	DATE: 10/15/87
SCULLIN SCHOOL 4160 N. Kingshighway St. Louis, Missouri 63115		
NO. 1	NO. 2	NO. 3
NO. 4	NO. 5	NO. 6
NO. 7	NO. 8	NO. 9
NO. 10	NO. 11	NO. 12
NO. 13	NO. 14	NO. 15
NO. 16	NO. 17	NO. 18
NO. 19	NO. 20	NO. 21
NO. 22	NO. 23	NO. 24
NO. 25	NO. 26	NO. 27
NO. 28	NO. 29	NO. 30
NO. 31	NO. 32	NO. 33
NO. 34	NO. 35	NO. 36
NO. 37	NO. 38	NO. 39
NO. 40	NO. 41	NO. 42
NO. 43	NO. 44	NO. 45
NO. 46	NO. 47	NO. 48
NO. 49	NO. 50	NO. 51
NO. 52	NO. 53	NO. 54
NO. 55	NO. 56	NO. 57
NO. 58	NO. 59	NO. 60
NO. 61	NO. 62	NO. 63
NO. 64	NO. 65	NO. 66
NO. 67	NO. 68	NO. 69
NO. 70	NO. 71	NO. 72
NO. 73	NO. 74	NO. 75
NO. 76	NO. 77	NO. 78
NO. 79	NO. 80	NO. 81
NO. 82	NO. 83	NO. 84
NO. 85	NO. 86	NO. 87
NO. 88	NO. 89	NO. 90
NO. 91	NO. 92	NO. 93
NO. 94	NO. 95	NO. 96
NO. 97	NO. 98	NO. 99
NO. 100	NO. 101	NO. 102
NO. 103	NO. 104	NO. 105
NO. 106	NO. 107	NO. 108
NO. 109	NO. 110	NO. 111
NO. 112	NO. 113	NO. 114
NO. 115	NO. 116	NO. 117
NO. 118	NO. 119	NO. 120
NO. 121	NO. 122	NO. 123
NO. 124	NO. 125	NO. 126
NO. 127	NO. 128	NO. 129
NO. 130	NO. 131	NO. 132
NO. 133	NO. 134	NO. 135
NO. 136	NO. 137	NO. 138
NO. 139	NO. 140	NO. 141
NO. 142	NO. 143	NO. 144
NO. 145	NO. 146	NO. 147
NO. 148	NO. 149	NO. 150
NO. 151	NO. 152	NO. 153
NO. 154	NO. 155	NO. 156
NO. 157	NO. 158	NO. 159
NO. 160	NO. 161	NO. 162
NO. 163	NO. 164	NO. 165
NO. 166	NO. 167	NO. 168
NO. 169	NO. 170	NO. 171
NO. 172	NO. 173	NO. 174
NO. 175	NO. 176	NO. 177
NO. 178	NO. 179	NO. 180
NO. 181	NO. 182	NO. 183
NO. 184	NO. 185	NO. 186
NO. 187	NO. 188	NO. 189
NO. 190	NO. 191	NO. 192
NO. 193	NO. 194	NO. 195
NO. 196	NO. 197	NO. 198
NO. 199	NO. 200	NO. 201
NO. 202	NO. 203	NO. 204
NO. 205	NO. 206	NO. 207
NO. 208	NO. 209	NO. 210
NO. 211	NO. 212	NO. 213
NO. 214	NO. 215	NO. 216
NO. 217	NO. 218	NO. 219
NO. 220	NO. 221	NO. 222
NO. 223	NO. 224	NO. 225
NO. 226	NO. 227	NO. 228
NO. 229	NO. 230	NO. 231
NO. 232	NO. 233	NO. 234
NO. 235	NO. 236	NO. 237
NO. 238	NO. 239	NO. 240
NO. 241	NO. 242	NO. 243
NO. 244	NO. 245	NO. 246
NO. 247	NO. 248	NO. 249
NO. 250	NO. 251	NO. 252
NO. 253	NO. 254	NO. 255
NO. 256	NO. 257	NO. 258
NO. 259	NO. 260	NO. 261
NO. 262	NO. 263	NO. 264
NO. 265	NO. 266	NO. 267
NO. 268	NO. 269	NO. 270
NO. 271	NO. 272	NO. 273
NO. 274	NO. 275	NO. 276
NO. 277	NO. 278	NO. 279
NO. 280	NO. 281	NO. 282
NO. 283	NO. 284	NO. 285
NO. 286	NO. 287	NO. 288
NO. 289	NO. 290	NO. 291
NO. 292	NO. 293	NO. 294
NO. 295	NO. 296	NO. 297
NO. 298	NO. 299	NO. 300
NO. 301	NO. 302	NO. 303
NO. 304	NO. 305	NO. 306
NO. 307	NO. 308	NO. 309
NO. 310	NO. 311	NO. 312
NO. 313	NO. 314	NO. 315
NO. 316	NO. 317	NO. 318
NO. 319	NO. 320	NO. 321
NO. 322	NO. 323	NO. 324
NO. 325	NO. 326	NO. 327
NO. 328	NO. 329	NO. 330
NO. 331	NO. 332	NO. 333
NO. 334	NO. 335	NO. 336
NO. 337	NO. 338	NO. 339
NO. 340	NO. 341	NO. 342
NO. 343	NO. 344	NO. 345
NO. 346	NO. 347	NO. 348
NO. 349	NO. 350	NO. 351
NO. 352	NO. 353	NO. 354
NO. 355	NO. 356	NO. 357
NO. 358	NO. 359	NO. 360
NO. 361	NO. 362	NO. 363
NO. 364	NO. 365	NO. 366
NO. 367	NO. 368	NO. 369
NO. 370	NO. 371	NO. 372
NO. 373	NO. 374	NO. 375
NO. 376	NO. 377	NO. 378
NO. 379	NO. 380	NO. 381
NO. 382	NO. 383	NO. 384
NO. 385	NO. 386	NO. 387
NO. 388	NO. 389	NO. 390
NO. 391	NO. 392	NO. 393
NO. 394	NO. 395	NO. 396
NO. 397	NO. 398	NO. 399
NO. 400	NO. 401	NO. 402
NO. 403	NO. 404	NO. 405
NO. 406	NO. 407	NO. 408
NO. 409	NO. 410	NO. 411
NO. 412	NO. 413	NO. 414
NO. 415	NO. 416	NO. 417
NO. 418	NO. 419	NO. 420
NO. 421	NO. 422	NO. 423
NO. 424	NO. 425	NO. 426
NO. 427	NO. 428	NO. 429
NO. 430	NO. 431	NO. 432
NO. 433	NO. 434	NO. 435
NO. 436	NO. 437	NO. 438
NO. 439	NO. 440	NO. 441
NO. 442	NO. 443	NO. 444
NO. 445	NO. 446	NO. 447
NO. 448	NO. 449	NO. 450
NO. 451	NO. 452	NO. 453
NO. 454	NO. 455	NO. 456
NO. 457	NO. 458	NO. 459
NO. 460	NO. 461	NO. 462
NO. 463	NO. 464	NO. 465
NO. 466	NO. 467	NO. 468
NO. 469	NO. 470	NO. 471
NO. 472	NO. 473	NO. 474
NO. 475	NO. 476	NO. 477
NO. 478	NO. 479	NO. 480
NO. 481	NO. 482	NO. 483
NO. 484	NO. 485	NO. 486
NO. 487	NO. 488	NO. 489
NO. 490	NO. 491	NO. 492
NO. 493	NO. 494	NO. 495
NO. 496	NO. 497	NO. 498
NO. 499	NO. 500	NO. 501
NO. 502	NO. 503	NO. 504
NO. 505	NO. 506	NO. 507
NO. 508	NO. 509	NO. 510
NO. 511	NO. 512	NO. 513
NO. 514	NO. 515	NO. 516
NO. 517	NO. 518	NO. 519
NO. 520	NO. 521	NO. 522
NO. 523	NO. 524	NO. 525
NO. 526	NO. 527	NO. 528
NO. 529	NO. 530	NO. 531
NO. 532	NO. 533	NO. 534
NO. 535	NO. 536	NO. 537
NO. 538	NO. 539	NO. 540
NO. 541	NO. 542	NO. 543
NO. 544	NO. 545	NO. 546
NO. 547	NO. 548	NO. 549
NO. 550	NO. 551	NO. 552
NO. 553	NO. 554	NO. 555
NO. 556	NO. 557	NO. 558
NO. 559	NO. 560	NO. 561
NO. 562	NO. 563	NO. 564
NO. 565	NO. 566	NO. 567
NO. 568	NO. 569	NO. 570
NO. 571	NO. 572	NO. 573
NO. 574	NO. 575	NO. 576
NO. 577	NO. 578	NO. 579
NO. 580	NO. 581	NO. 582
NO. 583	NO. 584	NO. 585
NO. 586	NO. 587	NO. 588
NO. 589	NO. 590	NO. 591
NO. 592	NO. 593	NO. 594
NO. 595	NO. 596	NO. 597
NO. 598	NO. 599	NO. 600



1ME



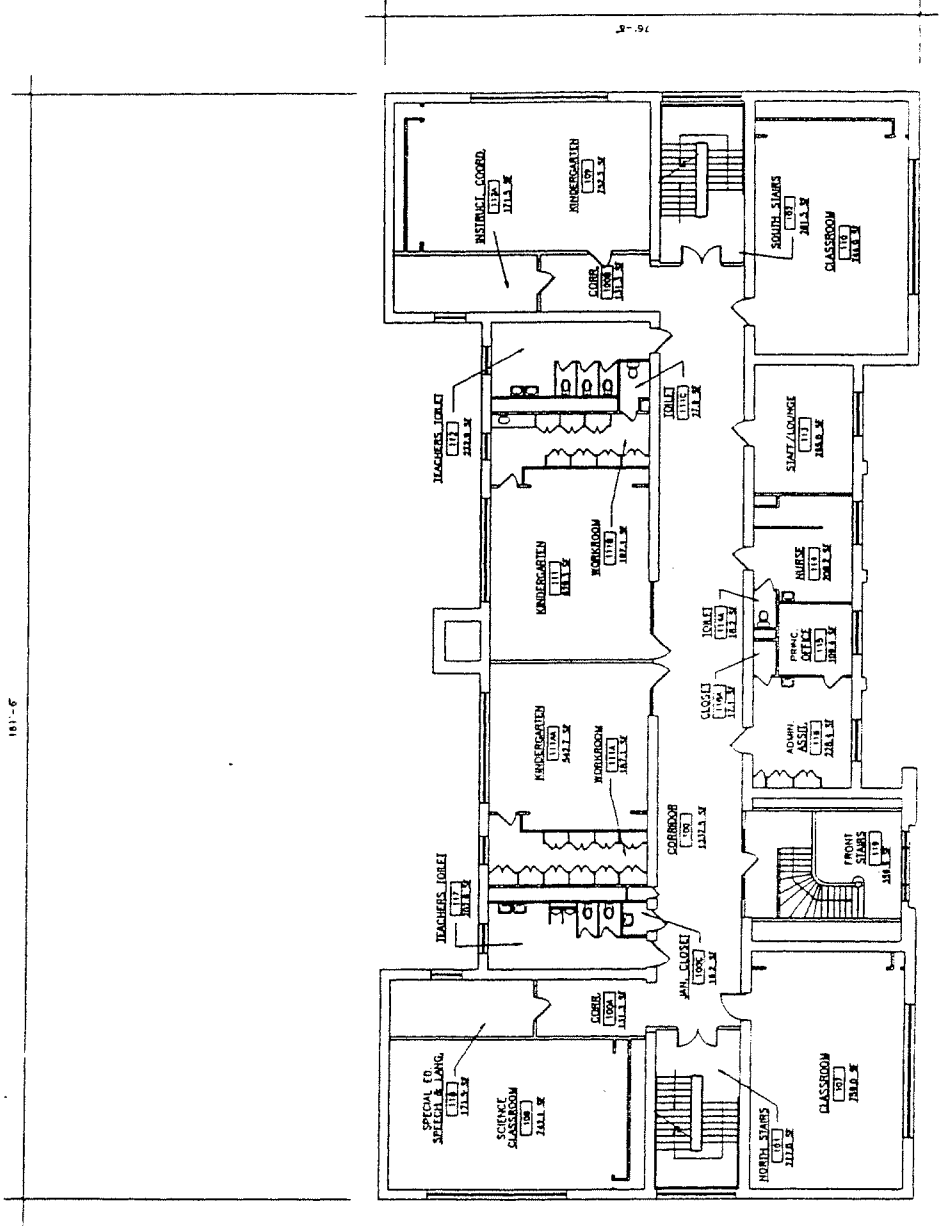
Ground Floor Plan
Scale: 1/8" = 1'-0"



PROJECT NO.	DATE	DESIGNER	OWNER	PROJECT NAME	ADDRESS	CITY	STATE	ZIP
				SCULLIN SCHOOL	4160 N. Kingshighway	St. Louis	Missouri	63113



WE



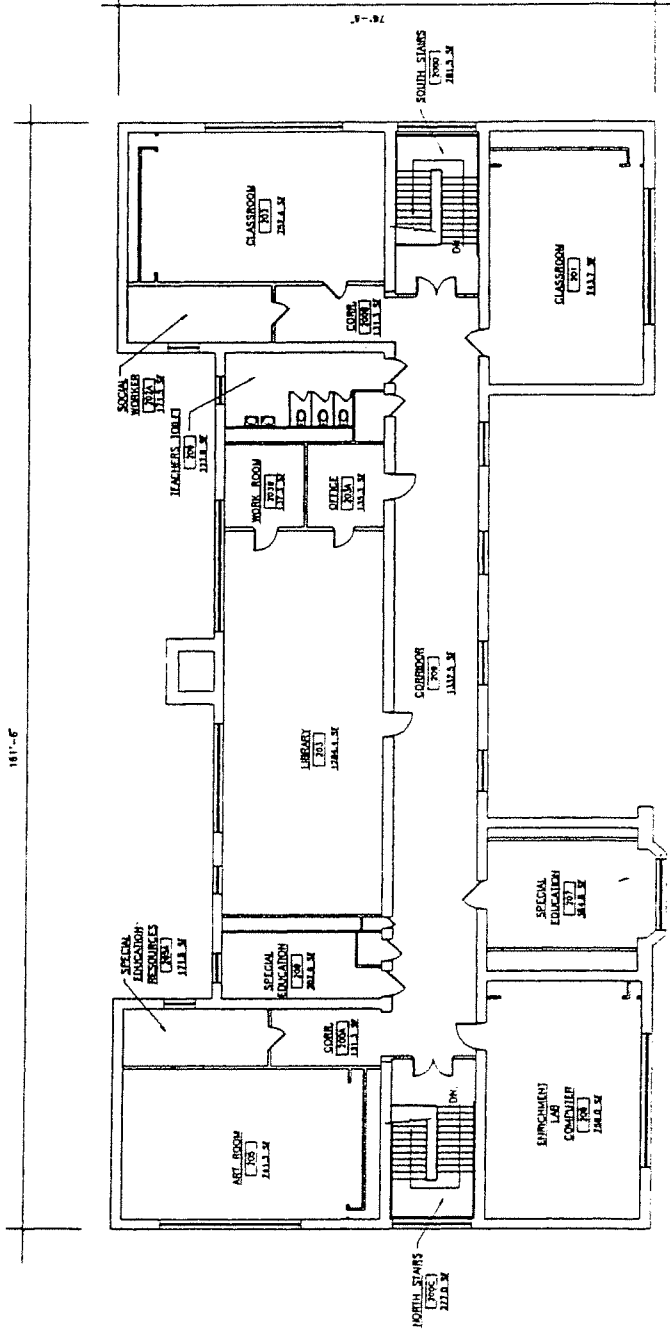
First Floor Plan
Scale: 1/8" = 1'-0"



DATE	DESIGNED BY	DATE	SCALE
NOV 19 1954	W. L. COLE	NOV 19 1954	1/8" = 1'-0"
SCULLIN SCHOOL			
1510 N. KINGSTOWN ST.			
CHICAGO, ILL.			
PROJECT NO.	NO. OF SHEETS	SHEET NO.	
100-1000	1	100-1000	



10/18



Second Floor Plan
Scale: 1/8" = 1'-0"

