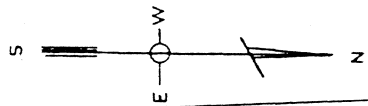


TOTAL PLOT AREA 132,100 S.F.  
 BUILDING AREA 73,310 S.F.  
 ASPHALT PLAY YARD 29,510 S.F.  
 ATHLETIC FIELD 6-0-0  
 LAWN AREA 3,000 S.F.  
 PARKING AREA 0-0-0



STOWE SCHOOL  
 5750 LOTUS AVE.  
 SEPT 1974  
 D. E. B.

SITE PLAN  
 SCALE 1/32" = 1'-0"

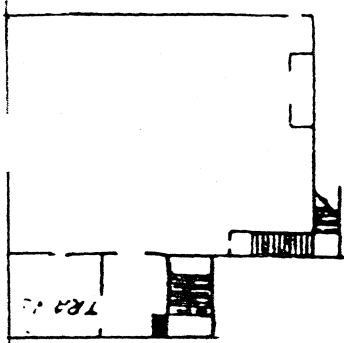
382'-11"  
 COTE BRILLIANT AVE.

GOODFELLOW BLVD 345'-0"

LOTUS AVENUE.  
 384'-11"

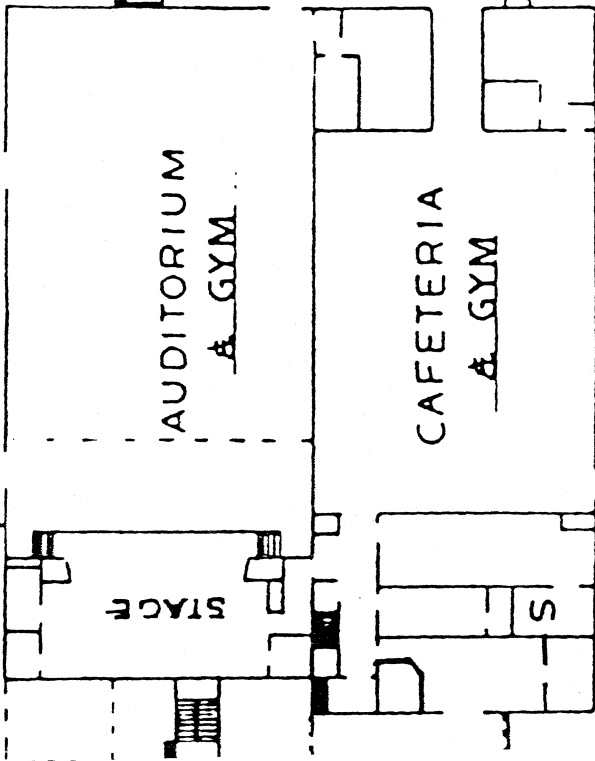
SCHOOL BUILDING

5' ALLEY

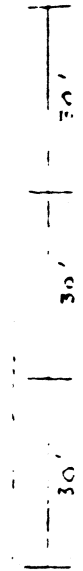
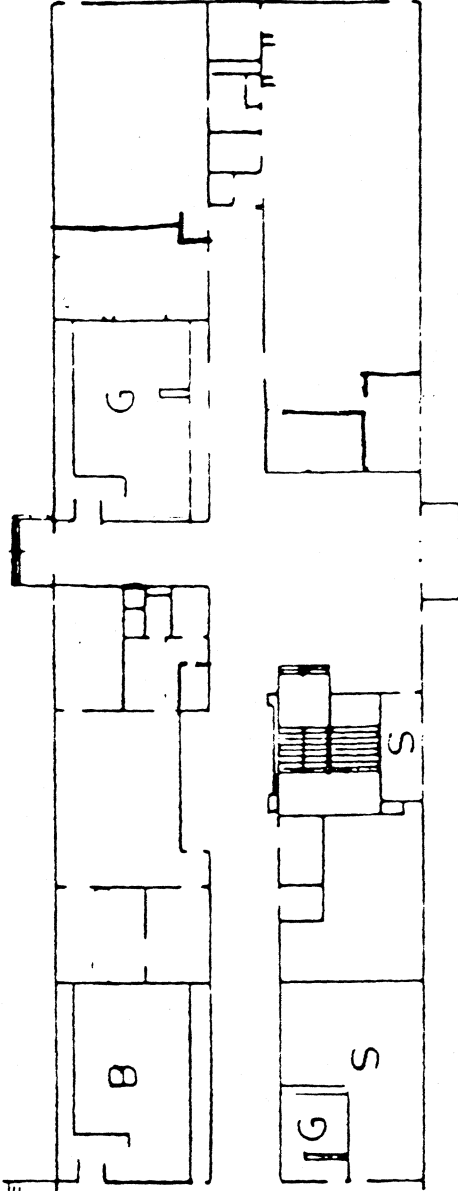
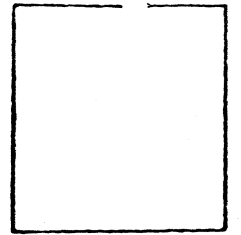


**BOILER ROOM**

**BELOW**



**ABOVE**

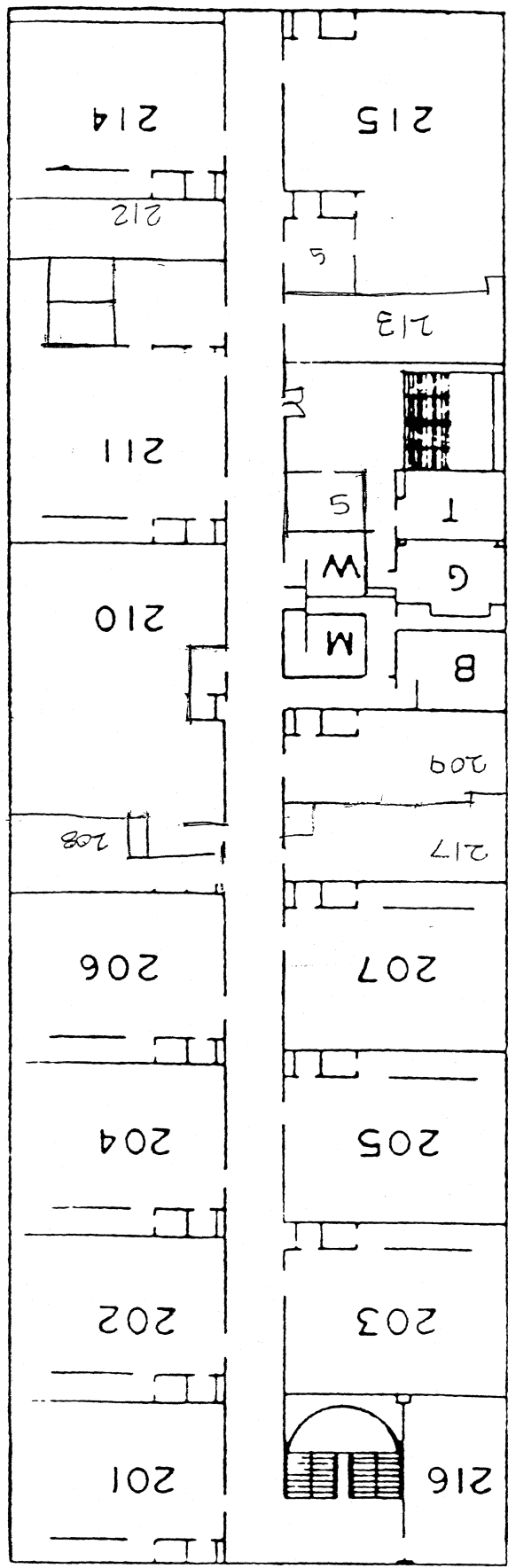


FIRST FLOOR PLAN

STOWE SCHOOL

SCHOOL

IME

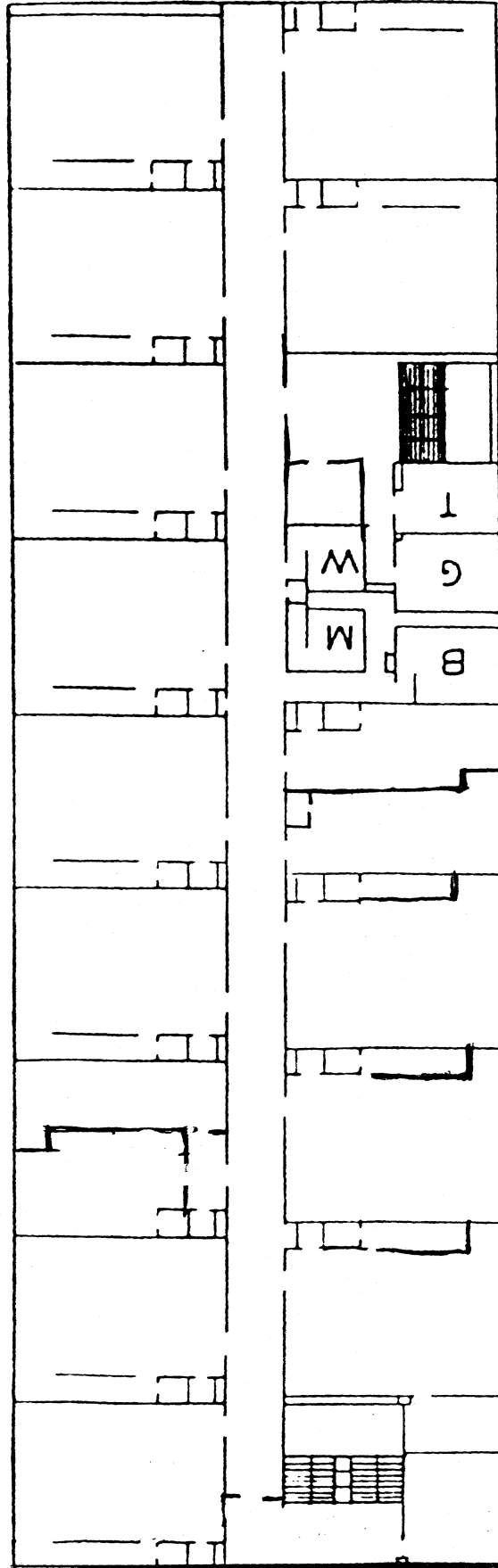


SCHOOL STOWE SCHOOL FLOOR SECOND FLOOR PLAN



SCHOOL STOWE SCHOOL

STOWE SCHOOL

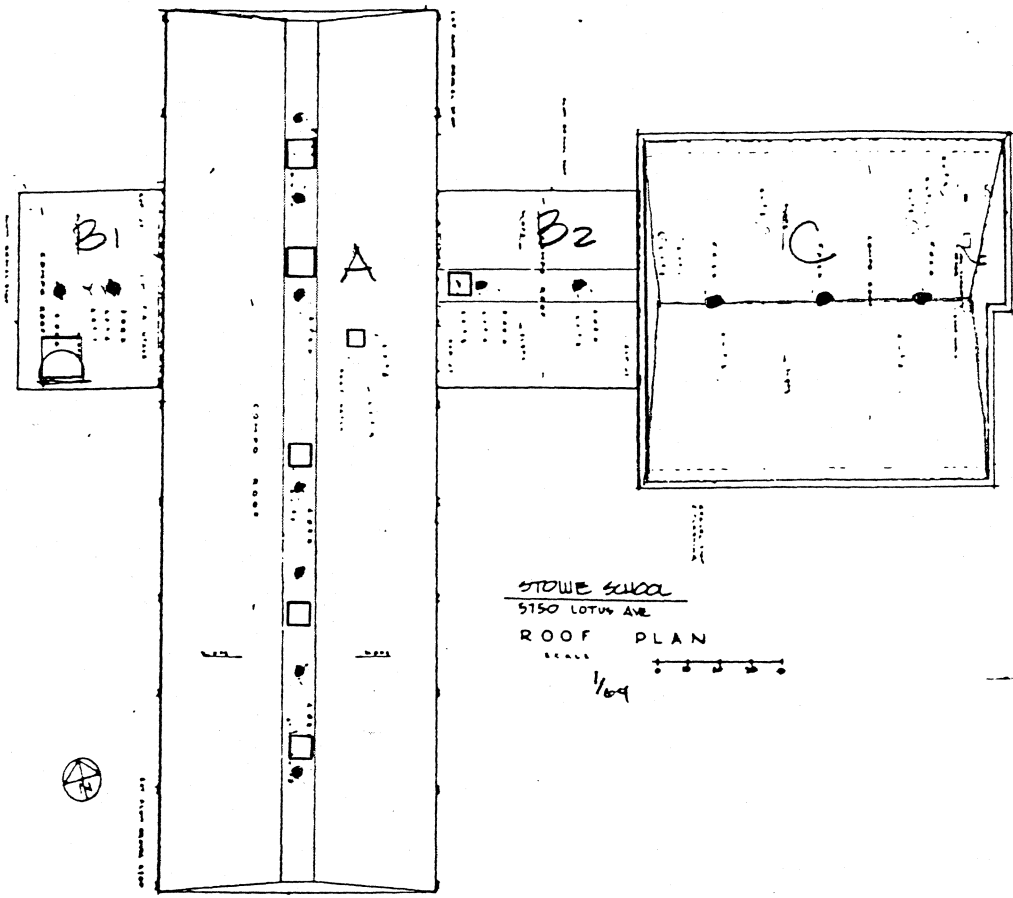


NEW

FLOOR THIRD FLOOR PLAN



STOWE  
STAIR CORRIDOR



STOWE SCHOOL  
 5150 LOTUS AVE  
 ROOF PLAN  
 1/64

STOWE SCHOOL

- A - CLASSROOMS
- B<sub>1/2</sub> - ADMINISTRATION
- C - GYM