

Basement Plan



DESCRIPTION	# DROPS
CLASSROOMS	25
ADMINISTRATION	30
TC's (Excluding MDF)	2
ENVIRONMENTAL	1

LEGEND

	= MDF
	= TC
	= REBOX
	= QUAD TO REBOX
	= QUAD TO MDF/TC
	= DEMARK
	= VERTICAL TRANSITION

- DMARC TO MDF
- TC FROM MDF
- RE4 FROM TC's / MDF

CID NO: F8B

SEAL

AS BUILT SUBMISSION

LAFAYETTE SCHOOL
 815 Ann Avenue
 St. Louis, Missouri 63104

DATE	DESIGNED	DRAWN	CHECKED

REVISIONS

DATE	DESCRIPTION
	AS BUILT

BID PACKAGE: _____

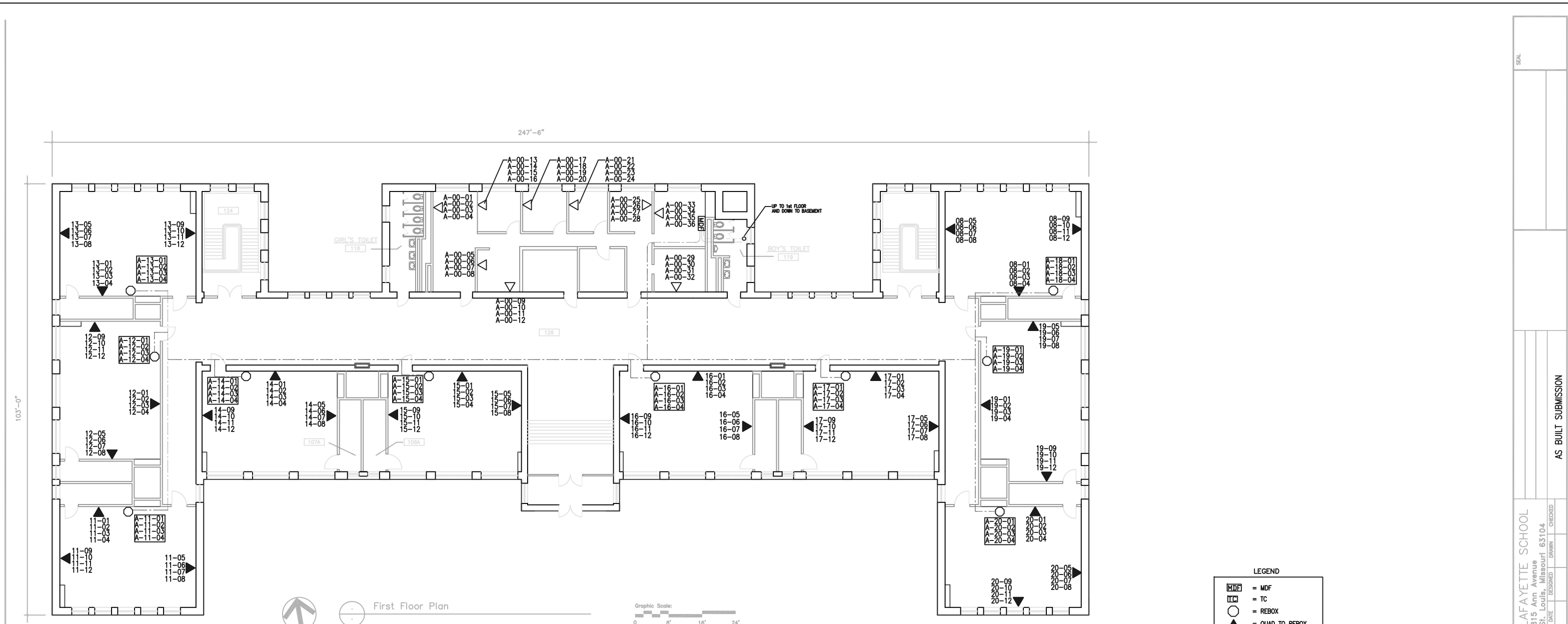
LETTING No: _____

BID DATE: _____

FILE No: _____

SHEET No: _____

Drawing prepared and modified by: **Stewart, McWhorter & Associates, Inc.** (2014) 041-0000



Drawing prepared and modified by: **Stewart, Burdette & Associates, Inc.** ©2010-2011-2012



First Floor Plan



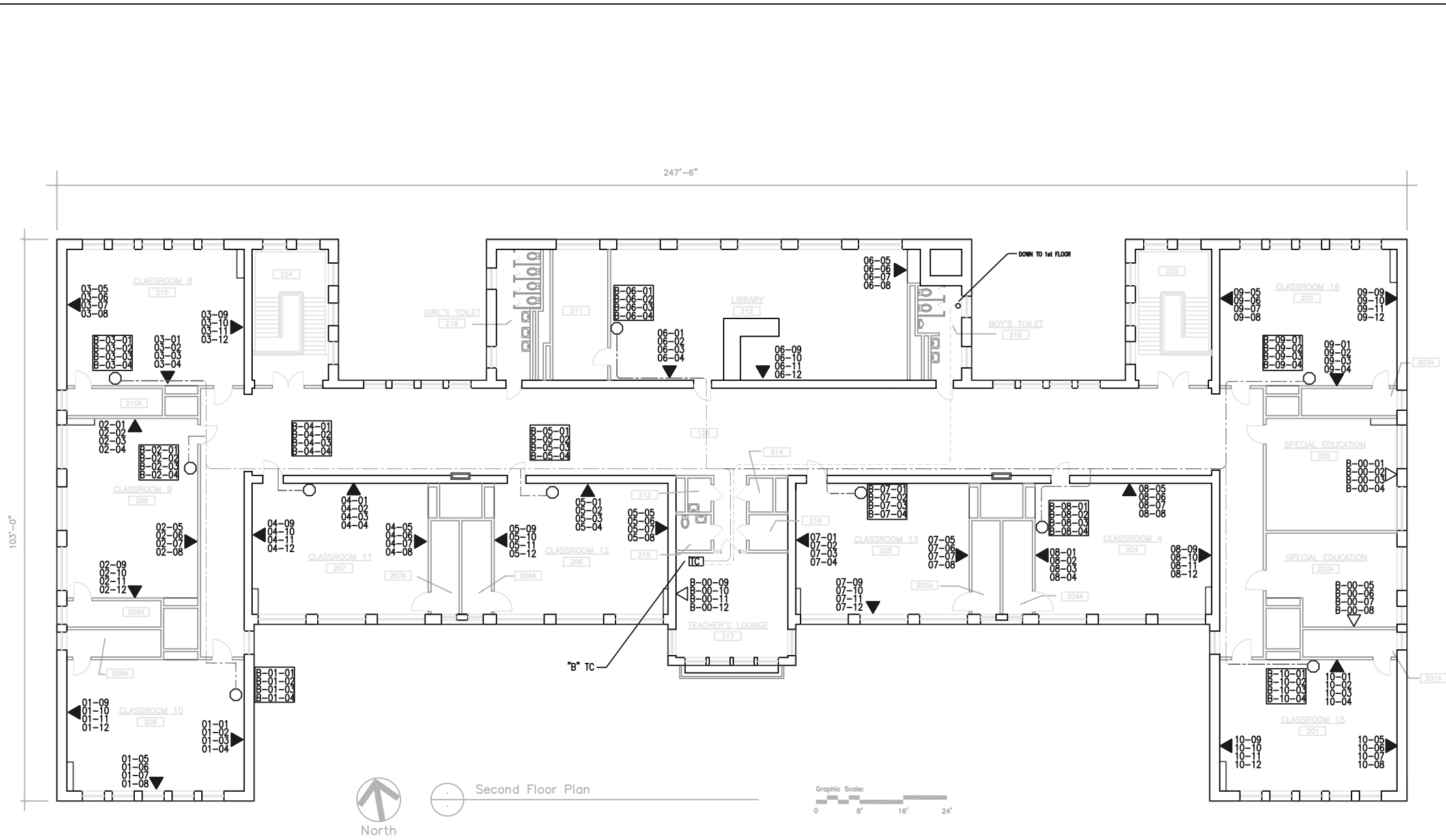
LEGEND

	= MDF
	= TC
	= REBOX
	= QUAD TO REBOX/TC
	= DEMARK
	= VERTICAL TRANSITION

	DMARC TO MDF
	TC FROM MDF
	RE4 FROM TC's / MDF

SEAL	
AS BUILT SUBMISSION	
LAFAYETTE SCHOOL 815 Ann Avenue St. Louis, Missouri 63104	
DATE	DRAWN
DESIGNED	CHECKED
REVISIONS DATE DESCRIPTION AS BUILT	
BID PACKAGE:	
LETTING No:	
BID DATE:	
FILE No:	
SHEET No:	

CID NO: F8A



Second Floor Plan

LEGEND

- MDF = MDF
- TC = TC
- = REBOX
- ▲ = QUAD TO REBOX
- ◀ = QUAD TO MDF/TC
- ▢ = DEMARK
- = VERTICAL TRANSITION

- DMARC TO MDF
- - - TC FROM MDF
- · - RE4 FROM TC's / MDF

SEAL	
AS BUILT SUBMISSION	
LAFAYETTE SCHOOL 815 Ann Avenue St. Louis, Missouri 63104	DATE DESIGNED DRAWN CHECKED
REVISIONS DATE DESCRIPTION AS BUILT	
BID PACKAGE:	
LETTING No:	
BID DATE:	
FILE No:	
SHEET No:	

CID NO: F8A