



# The Gateway Goods

November 18, 2023 Issue 10

**JROTC / Gateway  
Michael Autism  
Walk is a joint  
awards ceremony  
for JROTC October  
winners and an  
autism walk around  
the track.**

Top: Ezekiel Clark shows off his leadership award. Right: Louis Timberman accepts award for outstanding leadership.

*Photos by Colette Morton*







# Reveille

Top: Jade Vaughn, Ashley Nguyen, Micaela Lawrence, Yasmin Taylor, Kenneth Butler, and Caleb Williams stand at attention. Right: Kevin Brown stands for the National Anthem during the ROTC Reveille.



*Photos by Colette Morton*





# The GOOD

Students in Ms. Welch's chemistry classes began the year with a unit about the Periodic Table of Elements, learned about how atoms bond to form molecules and compounds, and are now busy completing a project about Chemical Reactions.

Top Left: Chem\_Vocab – (L-R) Jackson Paiz, Valery Bonilla-Jaime, Mariette Vilaire-Santiago, and Sabine Elmi use their notes to complete a vocabulary matching activity about atoms, compounds, and the periodic table.

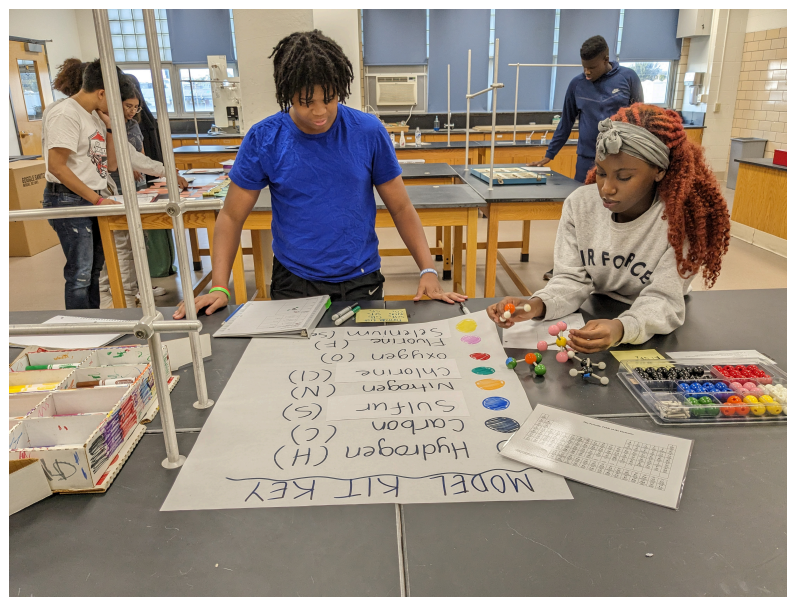
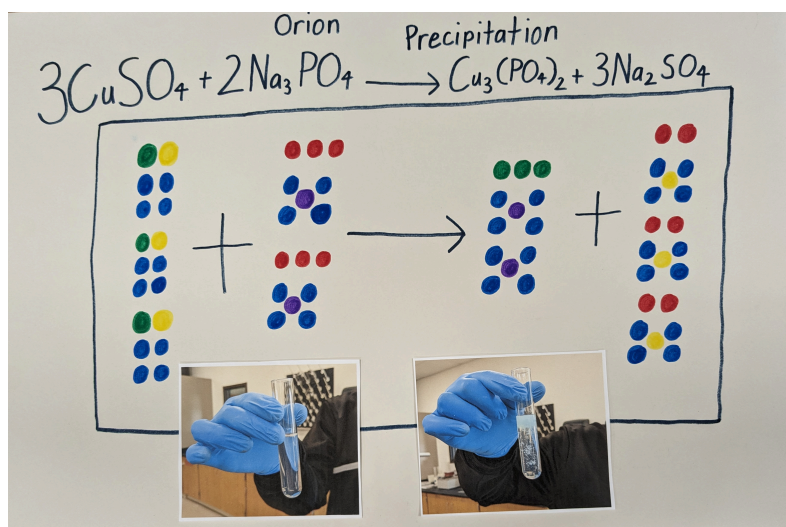
Bottom Left: Chem\_Penny – (L-R) Romahd Leatherberry, Tylin Moore, Eliha N'Guessan, and Alexis Sarau compare the surface tension of water, nail polish remover, and mineral oil by trying to fit as many drops as possible on a penny.

Top Right: Chem\_Poster – Poster by Orion McBride.

Bottom Right: Chem\_Models – Keith Jacobs and Naome Davis use model kits to practice identifying chemical compounds.

*Photos by Emily Welch.*

# CHEMISTRY







# *Color Guard for the Massing of the Colors*



Gateway Students  
joined other SLPS  
students Saturday for  
the St. Louis City  
Veteran's Day parade.  
Four of Gateway's  
students joined the  
Massing of the Colors.

Left and bottom: Second row: Alexis Sarau,  
Nykel Brown, Curtis Sweat and Naomi  
Davis (back to front).

*Photos by Gregory Stephan.*







# A Walk

Left: Students Nasir Stanton, Jayden Jackson, Corté Graves, and Tara Castleman walk the track to support autism.

Right: Jasmine Belvin and Xavier Wesley walk by Jaeda Mosely and teacher TaNieshia Hamilton as they pose for the camera.



Left: Tyler Lee poses for the camera.

# For Autism

*Photos by Gregory Stephan.*





Ganelle Claxton and Kennedy Carothers stand in front of a metal gum tree while the tour guide speaks.



SOUTHEAST MISSOURI  
STATE UNIVERSITY · 1873®

*Photos by Joseph Schramm.*



Daisheneh Perry, Mariah Saettele, Nadia Ball, Trey Shelton, Kennedy Carothers, Mohesh Nepal, Gerbis Tiul-Jordan get a tour around the university.

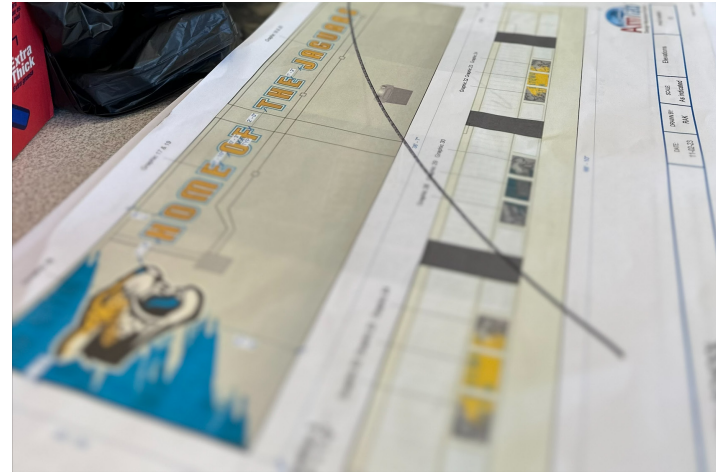


# Looking into the Future



*Photos by Joseph Schramm.*





# Extreme Makeover

## Cafeteria 2023 Edition






# *Thank You*

*November is a time to  
give thanks to those who  
work behind the scenes to  
make Gateway better.*



Hazel Newsome,  
Secretery



A photograph of three people in a school hallway. A young man stands in the background on the left, wearing a blue polo shirt under a black hoodie. In the foreground, a woman with dreadlocks and a headband sits on the left, looking slightly to the side. To her right, a pregnant woman with braids stands, smiling at the camera. The hallway has fluorescent lights and tables in the background.

*Giving thanks only takes  
a moment of our time.*

A decorative graphic consisting of multiple concentric, horizontal orange lines that curve around the left side of the 'Thank You' text.

*Thank You*

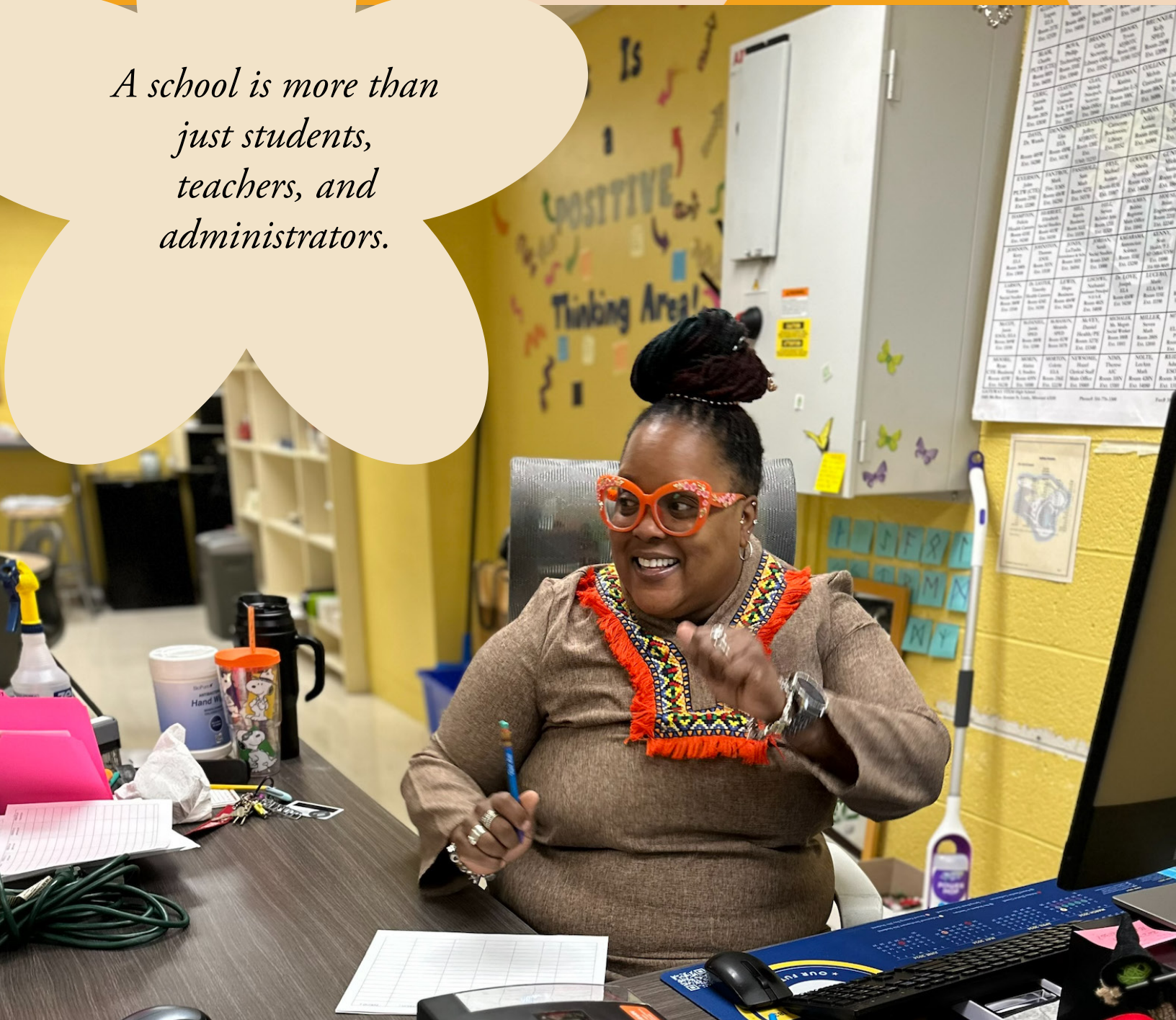
*Chris P., Tamika  
Tolin, and  
Danielle  
Norwood,  
custodians*



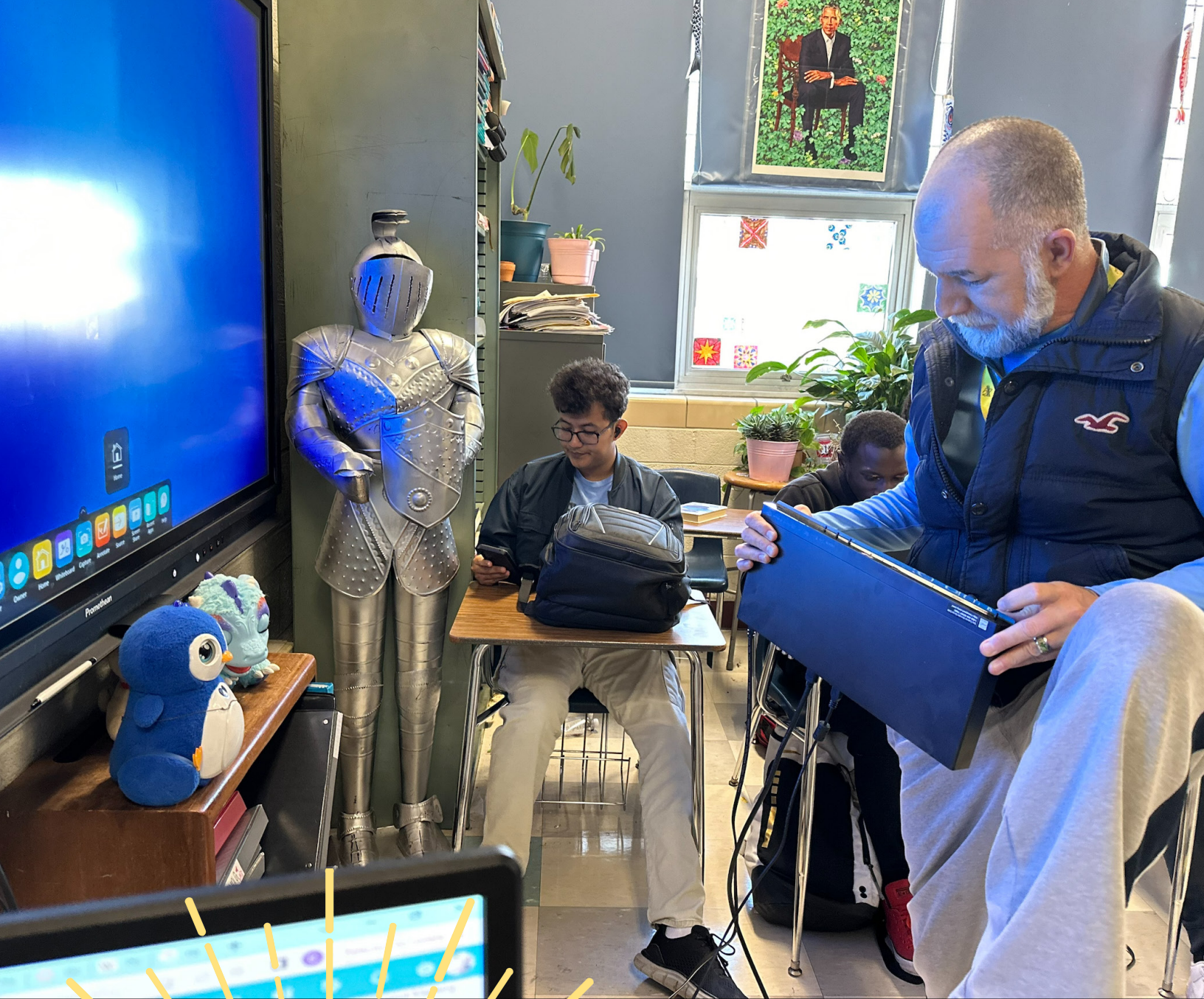
# Thank you

LaTasha Jones,  
Attendance Officer

*A school is more than  
just students,  
teachers, and  
administrators.*







*School is a place we  
build a future.*

Phillip Bova  
Information  
Technology Site  
Coordinator

Thank you





*School should be a safe space.*



*Thank you*

Antoin Gates and  
Glen Cooper.





# Good Scores

At the start of the year, Beable was introduced to us as a tool to improve reading skills in SLPS. It gets students to read and practice much-needed skills. Mathhew Caruso's student, Jackson Paiz, has excelled.

For October there was a challenge in the program where students all across the country were competing, and not only did he come in number one for our school, also came in number one for all of SLPS. To put it in perspective, for the entire program, across the country, 3rd place had a score of 949, and Jackson's score was 906. Second place in SLPS was 667, while second place in our school was 275.

*Story by Matthew Caruso.  
Photos by Colette Morton.*

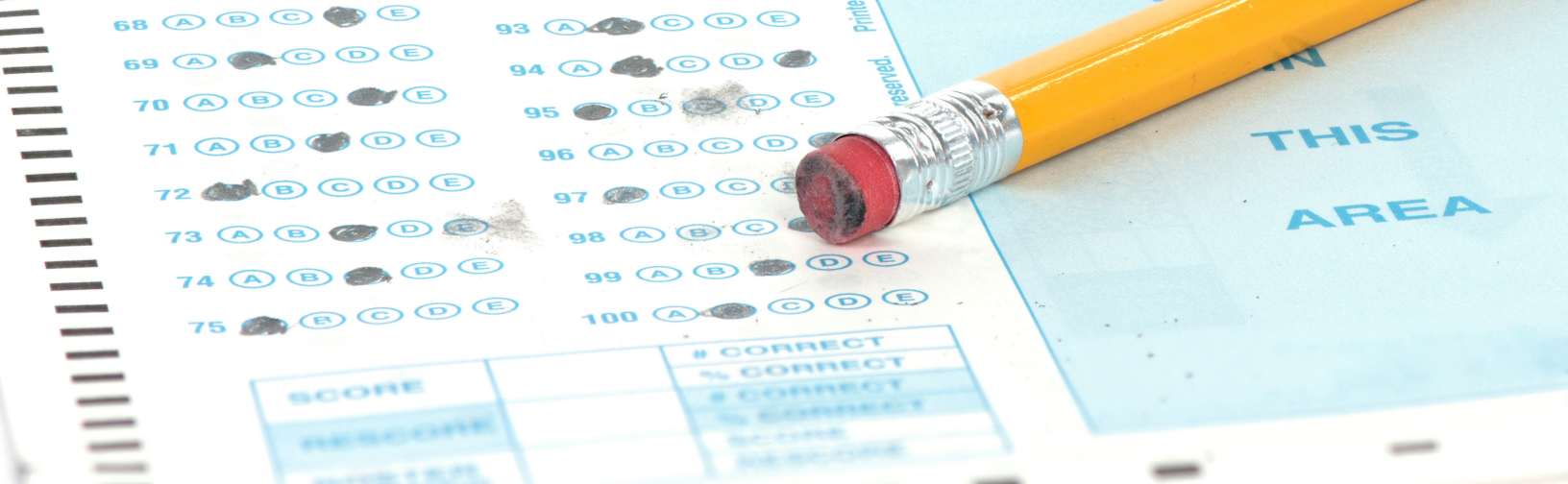


Top: Jackson Paiz who is currently in first place in the district.

Left: Qunoot Alsultani who is also excelling in the competition.

Photos by  
Colette  
Morton.





# Need Help with the ACT?

See Mr. Mitchell  
every Tuesday in  
room 421N from  
2:10 to 5:00 p.m.

Students who are  
playing school sports  
or who have their  
own transportation  
do not have to stay  
the entire time!

## ACT Super Achiever:



ACT Score: 28 Super Score: 31

**William  
Colston**



# STARE PARTS

# TEAM 2018

Robotics

All You Can Eat Pancake & Sausage Dinner

Featuring:



Date: November 17<sup>th</sup>

Time: 5:00 PM - 7:00 PM

Address: 5101 McRee Avenue

St. Louis, MO 63110

Admission \$10 per person

(Admission can be purchased at the door)

Gateway Alum & local legend Daniel Drake will be here making pancake art. Come get a custom pancake with your favorite anime character... or your face... or your pet... or something else weird and cool!

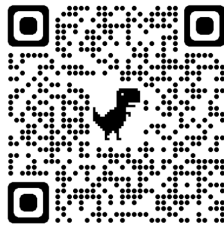
We will have silent auctions, raffle prizes, and a 50/50 drawing.

We will have robot demonstrations showcasing our success this season. Come see STL South League's #1 Robot. We are currently 5-1 for the season.





# NOVEMBER REP VISITS



UNIVERSITY OF  
MISSOURI COLUMBIA  
11/8 @ 12:00

WEBSTER UNIVERSITY  
11/16 @ 9:45

UNIVERSITY OF MISSOURI  
- ST. LOUIS  
11/28 @ 1:30

LEARN ABOUT THE ENVIRONMENT  
YOU LIVE IN, GROW FOOD, AND  
MORE!



Freshmen Success Team Presents

## INCREDIBLE PIZZA

ALL  
STUDENTS



NOVEMBER 16  
9-11TH GRADERS  
NOVEMBER 17 -  
SENIORS ONLY

FIELD TRIP

5254 SOUTH LINDBERGH BLVD. ST. LOUIS, MO 63126

\*\*\*Criteria:\*\*\*

\*2.5 GPA or higher\*

\*No more than 2 tardies or class cuts\*

\*No more than 1 referral\*

\*\*\*NO OSS\*\*\*

FOR MORE INFO EMAIL Mr. Kinnie, Dr. Berry or Ms.  
Branson : cliffon.kinnie@slps.org,



## ST. LOUIS QUEER+ SUPPORT HELPLINE Peer Support Helpline

LOCAL

(314) 380-7774

HELPLINE HOURS

TOLL-FREE

(844) 785-7774

Friday to Monday, 1-7 pm CT

### WHAT WE DO 📞

We provide free, confidential, and identity-affirming emotional support and resource referrals, by and for the St. Louis LGBTQIA+ community.

### WHEN TO CALL

Call to chat with a trained peer counselor; process emotions, talk through resources, brainstorm ideas to assist a friend or loved one, or simply have a meaningful conversation!

We prioritize queer folks with multiple marginalized identities, including:

- Queer and Trans People of Color (QTPOC)
- Queer immigrants and refugees

### WHO CAN CALL

Anyone in the U.S. can call, including LGBTQIA+ individuals, friends, family, and allies! You don't have to identify as queer or be located in St. Louis to call.

*Note: Our resource guide is focused on St. Louis, so our volunteers are not as familiar with resources outside of St. Louis. If you call from elsewhere, our volunteers can work with you to explore resources in your area.*